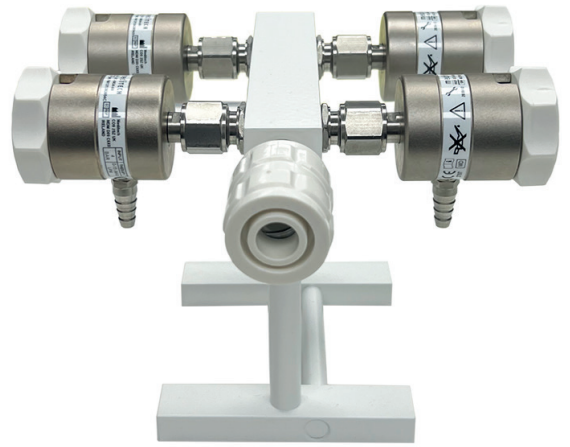


4 Way Flow Selector On Stand Mount

BS Check Unit



- **No Calibration required EVER**
- **Lightweight construction**
- **Available with International Fittings**
- **7 Year Warranty**
- **7 Year service Interval**
- **Mass casualty device**

Excellent performance and robustness, coupled with a very lightweight design. Manufactured from a strong aluminium stand mount. Supplied with a BS Schrader Check Unit to connect to a 4 BAR Oxygen source. For use in all Hospital and Emergency Environments.

The Meditech 4 Way Flow Selector has been designed to deliver precision flow rates, without the need for any calibration. Supplied with Push Fit "fir-tree" for direct attachment of Oxygen Therapy accessories.

AVAILABLE GAS TYPES:
OXYGEN | MEDICAL AIR | ENTONOX

THERAPY OUTLET TYPES



FIR TREE



9/16th THREADED
THERAPY CONNECTOR



3/8" BSP THREADED
THERAPY CONNECTOR



1/4" BARB

PROBE TYPE



BS PROBE



DISS



DIN



AGA



AFNOR



SIS



CZECH



UNIFOR



OUTLET TYPES



BS SCHRADER



DISS



DIN



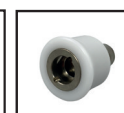
AGA



AFNOR



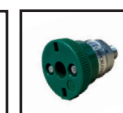
SIS



CZECH



UNIFOR



OHIO



SPECIFICATION

Intended Gas:	Medical Oxygen (O ₂)
Inlet pressure:	4 bar (400 kPa)
Set Flow Rates in lpm:	Three flow rates options available: 1/2, 1, 2, 3, 4, 6, 8, 10, 15 lpm 1/2, 1, 2, 3, 4, 6, 8, 10, 15, 25 lpm 10, 20, 30, 35, 40, 50, 55, 60, 70 lpm
Inlet Connections:	Schrader (BS 5682:2015) and other international connections
Outlet (Patient) Connections.	Firtree style barbed outlet.
Intended Life:	10 Years
Service Interval:	7 Years
Warranty Period:	7 Years
Complies With:	ISO 15002: 2008
Weight including hose:.....	1.2Kg
Dimensions:	Height: 15CM x 12CM (excluding hose)

TO PURCHASE OR FOR FURTHER DETAILS:
Contact us by email or telephone for more details,
including specific part numbers, prices, etc.

B.N.O.S. Meditech Ltd.
9 Fifth Avenue, Bluebridge Industrial Estate,
Halstead, Essex CO9 2SZ, England, UK.
Tel: +44 (0)1787 479475 • Fax: +44 (0)1787 477747
E-mail: sales@meditech.uk.com • www.meditech.uk.com

Meditech Flow Selectors are CE marked in accordance with the Medical Devices Directive in the EU and UKCA to the Medical Devices Regulations 2002. All items in this range are sold with a return to manufacturer warranty against manufacturing defects. These products are part of a series of medical gas and resuscitation products available from B.N.O.S. Meditech. If the product you require is not shown here, or if you require more information, please contact your distributor or contact us directly. Specifications may be subject to change without notice. B.N.O.S. Meditech Ltd Terms and Conditions of sale apply, available on application or from our website. Entonox® is a trade mark of the Linde Group

medITECH
MEDICAL GAS EQUIPMENT

Distributor: