



Twin Flow Selector, Twin Adaptor With BS Probe

- **No Calibration required EVER**
- **Lightweight construction**
- **Available with International Fittings**
- **7 Year Warranty**
- **7 Year service Interval**

Excellent performance and robustness, coupled with a very lightweight design.

For use in all Hospital and Emergency environments, the Twin Flow Selector is designed to be plugged into Medical Oxygen Wall Outlets.

The Meditech Twin Flow Selector, Twin Adaptor has been designed to deliver precision flow rates, without the need for any calibration. It has a standard 2M hose length (other hose lengths available upon request).

Can be supplied in either of two formats: Push-Fit 'Firtree' Fitting for direct attachment on a Oxygen Therapy delivery system or With a threaded outlet fitting for the attachment of a humidifier. *(Humidifier sold separately)*

PROBE TYPES:



BS SCHRADER



DISS



DIN



AGA



AFNOR



SISS



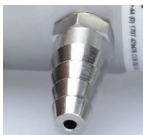
CZECH



UNIFOR



THERAPY TYPES:



FIR TREE



9/16" THREADED
THERAPY
CONNECTOR



3/8" BSP
THREADED THERAPY
CONNECTOR



1/4" BARB

AVAILABLE GAS TYPES:

- O₂
- MA4
- Entonox

SPECIFICATION

Intended Gas:	Medical Oxygen (O ₂ , MA4, O ₂ /N ₂ O)
Inlet pressure:	4 bar (400 kPa)
Set Flow Rates in lpm:	Three flow rates options available: 1/2, 1, 2, 3, 4, 6, 8, 10, 15 lpm 1/2, 1, 2, 3, 4, 6, 8, 10, 15, 25 lpm 10, 20, 30, 35, 40, 50, 55, 60, 70 lpm
Inlet Connections:	Schrader (BS 5682:2015) and other international connections
Outlet (Patient) Connections.	Firtree style barbed outlet, 9/16 threaded outlet, 3/8" BSP threaded outlet & 1/4" barb
Intended Life:	10 Years
Service Interval:	7 Years
Warranty Period:	7 Years
Complies With:	ISO 15002: 2008

TO PURCHASE OR FOR FURTHER DETAILS:
Contact us by email or telephone for more details,
including specific part numbers, prices, etc.

B.N.O.S. Meditech Ltd.
9 Fifth Avenue, Bluebridge Industrial Estate,
Halstead, Essex CO9 2SZ, England, UK.
Tel: +44 (0)1787 479475 • Fax: +44 (0)1787 477747
E-mail: sales@meditech.uk.com • www.meditech.uk.com

Meditech Flow Selectors are CE marked in accordance with the Medical Devices Directive in the EU and UKCA to the Medical Devices Regulations 2002. All items in this range are sold with a return to manufacturer warranty against manufacturing defects. These products are part of a series of medical gas and resuscitation products available from B.N.O.S. Meditech. If the product you require is not shown here, or if you require more information, please contact your distributor or contact us directly. Specifications may be subject to change without notice. B.N.O.S. Meditech Ltd Terms and Conditions of sale apply, available on application or from our website. Entonox® is a trade mark of the Linde Group

medITECH
MEDICAL GAS EQUIPMENT

Distributor: