

medITECH

MEDICAL GAS EQUIPMENT

HOSPITAL PRODUCT CATALOGUE



Reliability and Performance Guaranteed
Manufactured in the United Kingdom



AN INTRODUCTION

We are a world class British medical device company, established in Essex, UK, in 1989. We design, manufacture and export ventilation, resuscitation, oxygen therapy and other medical gas products to over one hundred countries worldwide. We set standards for saving peoples lives. We work closely with professional users within the emergency medical services, hospitals, military, industrial safety and marine industries to develop market leading medical devices. We are the UK's leading company in the field of medical gas equipment. Committed to customer service we supply high calibre products and our technical engineering ability permits necessary product modifications to comply with local market requirements, throughout the world. We have a distribution network that sells and services international markets.

PRODUCTION

We have a full CNC machining and plastic moulding centre, equipped with a wide range of machines. This allows us to handle all of our component machining in-house, streamlining our supply chain and enabling us to deliver high quality products quickly. We machine our products from a number of materials, such as brass, aluminium, stainless steel and plastic.

BENEFITS OF MACHINING IN-HOUSE:

- Reduction in energy consumption
- Lowers our carbon footprint
- Produces little to no waste
- Zero defects and greater accuracy
- Faster and efficient production
- Quicker assembly

SERVICES WE OFFER:

- Plastic injection moulding services
- Two-part liquid silicone moulding
- Repair & maintenance of existing tools
- Creation of new tools
- Service training

NET ZERO

B.N.O.S. Meditech Ltd is committed to achieving Net Zero emissions by 2045 for emissions including scopes 1,2 and 3. The commitment was made on the 21st March 2024 by the approving board.

EVERGREEN STATEMENT

The Evergreen Assessment is one of several NHS initiatives designed to support its net zero and wider sustainability objectives. We are delighted to be supporting the NHS to achieve their net zero and sustainability ambitions. We are pleased to have completed the NHS Evergreen Sustainable Supplier Assessment. The Assessment is a self-assessment and reporting tool and resulted in us receiving a Level 1: Publicly committed to net zero carbon and engaged with sustainability.

QUALITY ASSURANCE

Quality is always at the forefront of B.N.O.S. Meditech's core values, to ensure a service of real quality for all our customers. We are committed to providing high standard, quality, and compliant medical devices with a reputation of providing exceptional sales and after-sales service for our customers. This service includes the manufacture, sale, distribution, maintenance and service of our medical gas equipment and wholesale distribution of medical oxygen. We foster a work culture of continual improvement of its products and processes, to ensure our products continue to be state of the art.

CERTIFICATIONS

B.N.O.S. Meditech has a Quality Assurance System certified in accordance with EN ISO 13485:2016+A11:2021 (Certificate No. MD 662950) and all medical devices manufactured, comply with the requirements of UKCA Medical Device regulations 2002 (Certificate No. UKCA 754817) and the Medical Device Directives 93/42/EEC (Certificate No. CE 662942), transitioning to the EU Medical Device Regulations EU 2017/745). All medical devices meet the technical specifications of national and international standards.

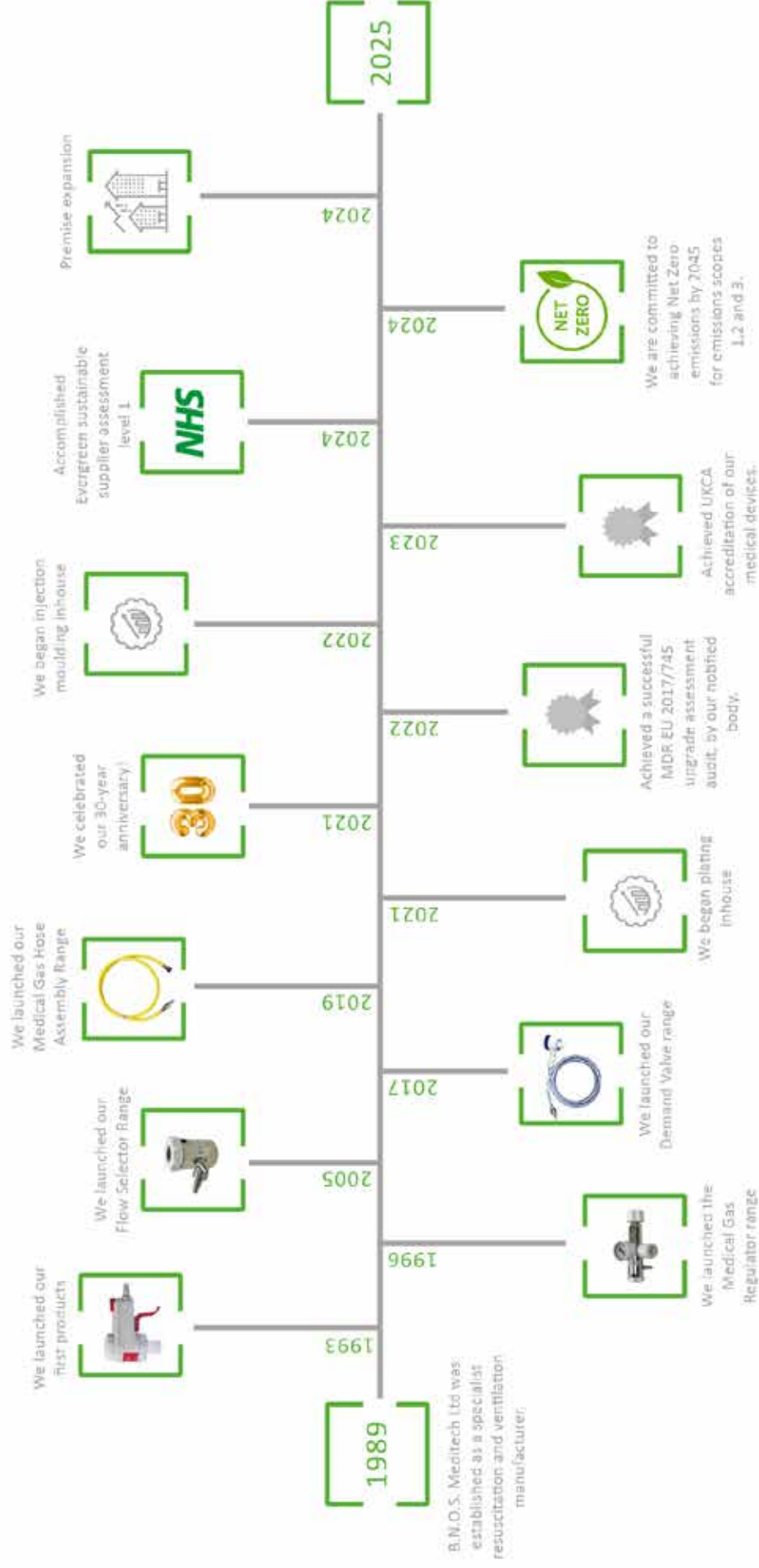
B.N.O.S. Meditech is a wholesale distributor of medical oxygen cylinders under the MHRA authorisation licence number UK WDA(H) 44056.

WORLDWIDE DISTRIBUTION

We export our product range to over 100 countries worldwide. We have an extensive distribution network to ensure all our customers' needs and local specifications are met.

EUROPE • AFRICA • ASIA • MIDDLE EAST • NORTH AMERICA • AUSTRALIA/ OCEANIA





CONTENTS

Regulators	8-15
Suction Units	18-23
Demand Valves	26-27
Flow Selectors	30-37
Gas Specific Adaptors	40-41
Hose Assemblies	44-49
Medical Gas Fittings	52-55
Hospital vacuum equipment	58-59
Terms and Conditions	60-61
Servicing	62

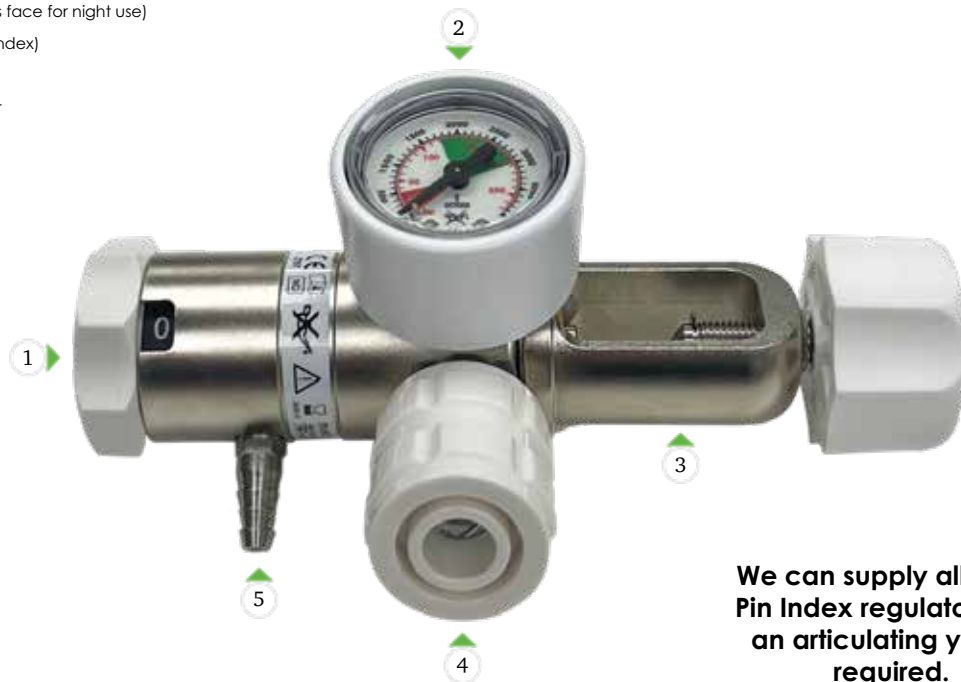




REGULATORS



- 1 Therapy Flow Rate Selector & Indicator (0-15, 0-25 & 0-70lpm)
- 2 Pressure Gauge (Luminous face for night use)
- 3 Regulator Inlet 4BAR (Pin Index)
- 4 Outlet 4 Bar (BS Schrader)
- 5 Therapy Outlet Connector



We can supply all of our Pin Index regulators with an articulating yoke if required.

Regulator available gases:

- Oxygen (O₂)
- Medical Air (MA4)
- Surgical Air (SA7)
- Nitrous Oxide (N₂O)
- Analgesic (N₂O/O₂)
- Carbon Dioxide (CO₂)

We have a full range of high pressure regulators which can be supplied with any inlet and outlet type to suit all local requirements and specifications. They are available for use with any medical gas. We have different models within the range which include therapy only, therapy with a 4 BAR outlet and non-therapy with a 4-BAR outlet.

We offer two regulator body types - Brass Body (55B) for mobile use in demanding conditions and Super Light (55SL) for mobile use where light weight is important.

Our regulator's are the market leaders, with the following USPs:

- 10 year service free
- 7 year warranty
- Can never fall out of calibration

OXYGEN & MA4 REGULATOR, PIN INDEX, THERAPY ONLY.

Colour will vary on gas choice

OXYGEN REGULATOR, PIN INDEX, 1 x BS SCHRADER THERAPY.**OXYGEN REGULATOR, PIN INDEX, 2 x BS SCHRADER THERAPY.**

O₂ Part No.
55B 677-0000-00 (0-15lpm)
55SL 777-0000-00 (0-15lpm)

MA4 Part No.
55B 691-0900-00 (0-15lpm)
55SL 791-0900-00 (0-15lpm)

- Multiple flow therapy outlet set by selector dial – ½, 1,2,3,4,6,8,10 & 15 lpm
- 0-25 & 0-70lpm flow rates also available
- 55B approx. 634g weight
- 55SL approx. 385g weight

Part No.
55B 677-0001-10 (0-15lpm)
55SL 777-0001-10 (0-15lpm)

- Multiple flow therapy outlet set by selector dial – ½, 1,2,3,4,6,8,10 & 15 lpm
- 0-25 & 0-70lpm flow rates also available
- 55B approx. 795g weight
- 55SL approx. 485g weight

Part No.
55B 677-0001-20 (0-15lpm)
55SL 777-0001-20 (0-15lpm)

- Multiple flow therapy outlet set by selector dial – ½, 1,2,3,4,6,8,10 & 15 lpm
- 0-25 & 0-70lpm flow rates also available
- 55B approx. 847g weight
- 55SL approx. 538g weight

OXYGEN REGULATOR, PIN INDEX, 1 x BS SCHRADER.

Part No.
55B 678-0001-10
55SL 778-0001-10

- Non-therapy Regulator
- 55B approx. 724g weight
- 55SL approx. 416g weight

OXYGEN REGULATOR, PIN INDEX, 2 x BS SCHRADER.

Part No.
55B 678-0001-20
55SL 778-0001-20

- Non-therapy Regulator
- 55B approx. 776g weight
- 55SL approx. 469g weight

MA4 REGULATOR, PIN INDEX, 1 X BS SCHRADER, THERAPY.

Part No.
55B 691-0908-10 (0-15lpm)
55SL 791-0908-10 (0-15lpm)

- Multiple flow therapy outlet set by selector dial – ½, 1,2,3,4,6,8,10 & 15 lpm
- 0-25 & 0-70lpm flow rates also available
- 55B approx. 795g weight
- 55SL approx. 485g weight

MA4 REGULATOR, PIN INDEX, 2 X BS SCHRADER, THERAPY.

Part No.
55B 691-0908-20 (0-15lpm)
55SL 791-0908-20 (0-15lpm)

- Multiple flow therapy outlet set by selector dial – ½, 1,2,3,4,6,8,10 & 15lpm
- 0-25 & 0-70lpm flow rates also available
- 55B approx. 847g weight
- 55SL approx. 538g weight

MA4 REGULATOR, PIN INDEX, 1 X BS SCHRADER.

Part No.
55B 692-0908-10
55SL 792-0908-10

- Non-therapy Regulator
- 55B approx. 724g weight
- 55SL approx. 416g weight

MA4 REGULATOR, PIN INDEX, 2 X BS SCHRADER.

Part No.
55B 692-0908-20
55SL 792-0908-20

- Non-therapy Regulator
- 55B approx. 776g weight
- 55SL approx. 469g weight

OXYGEN & MA4 REGULATOR, BULLNOSE INLET, THERAPY ONLY.

Part No.
55B 679-0100-00 (0-15lpm)
55SL 779-0100-00 (0-15lpm)

Part No.
55B 693-0100-00 (0-15lpm)
55SL 793-0100-00 (0-15lpm)

- Multiple flow therapy outlet set by selector dial – ½, 1,2,3,4,6,8,10 and 15lpm
- 0-25 & 0-70lpm flow rates also available
- 55B approx. 668g weight
- 55SL approx. 485g weight

OXYGEN REGULATOR, BULLNOSE INLET, 1 X BS SCHRADER, THERAPY.

Part No.
55B 679-0101-10 (0-15lpm)
55SL 779-0101-10 (0-15lpm)

- Multiple flow therapy outlet set by selector dial – ½, 1,2,3,4,6,8,10 and 15 lpm
- 0-25 & 0-70lpm flow rates also available
- 55B approx. 720g weight
- 55SL approx. 537g weight

OXYGEN REGULATOR, BULLNOSE INLET, 2 X BS SCHRADER, THERAPY.

Part No.
55B 679-0101-10 (0-15lpm)
55SL 779-0101-20 (0-15lpm)

- Multiple flow therapy outlet set by selector dial – ½, 1,2,3,4,6,8,10 and 15 lpm
- 0-25 & 0-70lpm flow rates also available
- 55B approx. 772g weight
- 55SL approx. 588g weight

OXYGEN REGULATOR, BULLNOSE INLET, 1 X BS SCHRADER.

Part No.
55B 680-0101-10
55SL 780-0101-10

- Non-therapy Regulator
- 55B approx. 645g weight
- 55SL approx. 463g weight

OXYGEN REGULATOR, BULLNOSE INLET, 2 X BS SCHRADER.

Part No.
55B 680-0101-20
55SL 780-0101-20

- Non-therapy regulator
- 55B approx. 772g weight
- 55SL approx. 588g weight

MA4 REGULATOR, BULLNOSE INLET, 1 X BS SCHRADER, THERAPY.

Part No.
55B 693-0108-10 (0-15lpm)
55SL 793-0108-10 (0-15lpm)

- Multiple flow therapy outlet set by selector dial – ½, 1,2,3,4,6,8,10 and 15 lpm
- 0-25 & 0-70lpm flow rates also available
- 55B approx. 720g weight
- 55SL approx. 537g weight

MA4 REGULATOR, BULLNOSE INLET, 2 X BS SCHRADER, THERAPY.

Part No.
55B 693-0108-20 (0-15lpm)
55SL 793-0108-20 (0-15lpm)

- Multiple flow therapy outlet set by selector dial – ½, 1,2,3,4,6,8,10 and 15lpm
- 0-25 & 0-70lpm flow rates also available
- 55B approx. 772g weight
- 55SL approx. 588g weight

MA4 REGULATOR, BULLNOSE INLET, 1 X BS SCHRADER.

Part No.
55B 694-0108-10
55SL 794-0108-10

- Non-therapy regulator
- 55B approx. 645g weight
- 55SL approx. 463g weight

MA4 REGULATOR, BULLNOSE INLET, 2 X BS SCHRADER.

Part No.
55B 694-0108-20
55SL 794-0108-20

- Non-therapy regulator
- 55B approx. 772g weight
- 55SL approx. 588g weight

**NON-MAGNETIC PIN INDEX OXYGEN
REGULATOR, THERAPY ONLY**

Part No.
720-0000-00 (0-15lpm)
720-0000-01 (0-25lpm)

- Non-magnetic material
- No calibration required
- Available with a Pin index, Bullnose & CGA-540 inlet

**NON-MAGNETIC PIN INDEX OXYGEN
REGULATOR, 1 x BS SCHRADER, THERAPY**

Part No.
720-0001-11 (0-15lpm)
720-0001-01 (0-25lpm)

- Non-magnetic material
- No calibration required
- Available with a Pin index, Bullnose & CGA-540 inlet

**ANALGESIC® REGULATOR WITH PIN
INDEX INLET, 1 X BS SCHRADER OULET**

Part No.
55B 673-0546-00
55SL 673-0546-01

- Non-therapy regulator
- 55B approx. 772g weight
- 55SL approx. 588g weight

**NITROUS OXIDE REGULATOR, WITH PIN
INDEX INLET, 1 X BS SCHRADER OUTLET**

Part No.	Gauge
55B 699-0014-10	200 BAR
55SL 799-0014-10	200 BAR
55B 673-0751-00	44 BAR
55B 673-0752-00	85 BAR

- Non-therapy regulator
- Available in 200 or 44 BAR WP models
- 55B approx. 772g weight
- 55SL approx. 588g weight

**NITROUS OXIDE REGULATOR WITH BULLNOSE
B5341 NO.13 INLET, 1 X BS SCHRADER OUTLET**

Part No.	Gauge
673-0114-10	44BAR

- Non therapy regulator
- Supplied 44 BAR WP

**CO2 REGULATOR WITH PIN INDEX
INLET, 1 X BS SCHRADER OUTLET**

Part No.
55B 673-0433-00
55SL 673-0419-00

- Non-therapy regulator
- 55B approx. 772g weight
- 55SL approx. 588g weight

TWO STAGE REGULATOR

We can supply a full range of two stage regulators with any input / output fittings

PIPELINE REDUCING REGULATOR

- Available with BS fitting or any other international fitting type.
- Pre-set mini regulator - adjustable

Part No.	Description
673-0771-00	O ₂ Adjustable, BS Probe to Schrader, 10 BAR to Zero
673-0772-00	MA4 Adjustable, BS Probe to Schrader, 10 BAR to Zero
673-0773-00	SA7 Adjustable, BS Probe to Schrader, 10 BAR to Zero

TOP ENTRY REGULATORS

PIN INDEX TE REGULATOR,
THERAPY ONLYPIN INDEX TE REGULATOR, THERAPY
1 X BS SCHRADERPIN INDEX TE REGULATOR, THERAPY
2 X BS SCHRADER

Part No.
 O₂ 55B 781-0001-00 (0-15lpm)
 55SL 781-0000-00 (0-15lpm)

Part No.
 MA4 55B 781-0046-00 (0-15lpm)
 55SL 781-0045-00 (0-15lpm)

Part No.
 O₂ 55B 781-0009-00 (0-15lpm)
 55SL 781-0008-00 (0-15lpm)

Part No.
 MA4 55B 781-0054-00 (0-15lpm)
 55SL 781-0053-00 (0-15lpm)

Part No.
 O₂ 55B 781-0018-00 (0-15lpm)
 55SL 781-0017-00 (0-15lpm)

Part No.
 MA4 55B 781-0062-00 (0-15lpm)
 55SL 781-0061-00 (0-15lpm)

PIN INDEX TE REGULATOR,
1 X SCHRADER, NON THERAPYPIN INDEX TE REGULATOR,
2 X SCHRADER, NON THERAPYPIN INDEX TE REGULATOR,
INCL. BOBBIN FLOW METER

Part No.
 O₂ 55B 781-0026-00
 55SL 781-0025-00

Part No.
 MA4 55B 781-0070-00
 55SL 781-0069-00

Part No.
 O₂ 55B 781-0028-00
 55SL 781-0027-00

Part No.
 MA4 55B 781-0072-00
 55SL 781-0071-00

Part No.
 O₂ 55B 781-0034-00 (0-15lpm)
 55SL 781-0033-00 (0-15lpm)

Part No.
 MA4 55B 781-0078-00 (0-15lpm)
 55SL 781-0077-00 (0-15lpm)

PIN INDEX TE REGULATOR, 1X SCHRADER,
INCL. BOBBIN FLOW METERPIN INDEX SE ARTICULATING REGULATOR,
INCL. BOBBIN FLOW METER

Part No.
 O₂ 55B 781-0042-00 (0-15lpm)
 55SL 781-0041-00 (0-15lpm)

Part No.
 MA4 55B 781-0086-00 (0-15lpm)
 55SL 781-0085-00 (0-15lpm)

Part No.
 O₂ 55B 673-0598-00 (0-15lpm)
 55SL 673-0609-00 (0-15lpm)

Part No.
 MA4 55B 673-0610-00 (0-15lpm)
 55SL 673-0649-00 (0-15lpm)

TOP ENTRY REGULATORS

BULLNOSE TE REGULATOR,
THERAPY ONLY



Part No.
55B 681-0100-00 (0-15lpm)
55SL 781-0100-00 (0-15lpm)

Part No.
55B 781-0134-00 (0-15lpm)
55SL 781-0133-00 (0-15lpm)

BULLNOSE TE REGULATOR, THERAPY
1 X BS SCHRADER



Part No.
55B 681-0101-10 (0-15lpm)
55SL 781-0097-00 (0-15lpm)

Part No.
55B 781-0142-00 (0-15lpm)
55SL 781-0141-00 (0-15lpm)

BULLNOSE TE REGULATOR, THERAPY
2 X BS SCHRADER



Part No.
55B 781-0106-00 (0-15lpm)
55SL 781-0105-00 (0-15lpm)

Part No.
55B 781-0150-00 (0-15lpm)
55SL 781-0149-00 (0-15lpm)

BULLNOSE TE REGULATOR,
1 X SCHRADER, NON THERAPY



Part No.
55B 673-0646-00
55SL 773-0646-00

Part No.
55B 695-0108-10
55SL 781-0157-00

BULLNOSE TE REGULATOR,
2 X SCHRADER, NON THERAPY



Part No.
55B 781-0116-00
55SL 781-0115-00

Part No.
55B 781-0160-00
55SL 781-0159-00

BULLNOSE TE REGULATOR,
INCL. BOBBIN FLOW METER



Part No.
55B 781-0122-00 (0-15lpm)
55SL 781-0121-00 (0-15lpm)

Part No.
55B 781-0166-00 (0-15lpm)
55SL 781-0165-00 (0-15lpm)

BULLNOSE TE REGULATOR, 1X SCHRADER,
INCL. BOBBIN FLOW METER



Part No.
55B 781-0130-00 (0-15lpm)
55SL 781-0129-00 (0-15lpm)

Part No.
55B 781-0174-00 (0-15lpm)
55SL 781-0173-00 (0-15lpm)

BULLNOSE SE REGULATOR,
INCL. BOBBIN FLOW METER



Part No.
55B 673-0555-00 (0-15lpm)
55SL 673-0650-00 (0-15lpm)

Part No.
55B 673-0651-00 (0-15lpm)
55SL 673-0652-00 (0-15lpm)

Create a **OXYGEN** Regulator to suit your specific requirements by following the steps below to generate your regulator part number.

STEP 1 Choose the Regulator **BODY TYPE** that you require.
Decide if you want Brass or Aluminium.

STEP 2 Choose the **TYPE** of Oxygen Pressure **INLET** that you require.

STEP 3 Choose the **TYPE** of Oxygen Pressure **OUTLET** that you require.

STEP 4 Choose **HOW MANY** Oxygen Pressure Outlets that you need for your Regulator.

STEP 5 Decide if you want your Regulator to have **OXYGEN THERAPY**, and if so, choose what **TYPE**.

4 BAR OXYGEN REGULATOR PART NUMBERING SYSTEM

For other gases, please contact a member of our sales team

Basic Regulator Type:

BRASS - 55B

- 677 – Pin Index regulator with therapy
- 678 – Pin Index regulator with no therapy
- 679 – 55B International (nut fitting) therapy regulator
- 680 – 55B International (nut fitting) non-therapy regulator

ALUMINIUM – 55SL

- 777 – Pin index regulator with therapy
- 778 – Pin index without therapy
- 779 – 55SL international (nut fitting) therapy regulator
- 780 – 55SL international (nut fitting)

Type of Outlet:

- 00 = (therapy only)
- 01 = BS5682 BS Schrader (UK)
- 02 = DISS 1240 (USA)
- 03 = AGA SS875 24 30:2004
- 04 = DIN 13260-2:2004
- 05 = AFNOR NF S90-116:1988 (French)
- 07 = SIS (sleeve index system) (AUS)
- 08 = MA4?
- 19 = HOSE BARB 1/4"
- 20 = CZECH
- 21 = 3/8"

Number of Outlet Fittings:

- 0 = None (Therapy ONLY)
 - 1 = One (to Front)
 - 2 = Two
 - 3 = One (to Rear)
- NOTE: Front Outlet is adjacent to Gauge



To create a Pin-Index Articulating Yoke Regulator, start the Product Code with

679-00 - 55B

779-00 - 55SL



Articulating Yoke

Type of inlet:

- 00 = Pin index BS EN ISO407:2021 (CGA 870, USA)
- 01 = Bullnose (UK)
- 02 = Bullnose (Benelux)
- 03 = W21.8 1/14th
- 04 = DINN 477 (G 3/4")
- 05 = CGA540 (USA)
- 15 = DIN 477 (G3/4") - SHORT

Maximum Therapy Flow Rate:

- 0 = Therapy flows 0-15lpm (fir tree connector)
- 0 = No therapy (use 0 also)
- 1 = Therapy flows 0-25lpm (fir tree connector)
- 2 = Therapy flows 0-15lpm (Threaded connector 9/16" – 18 for humidifier)
- 3 = Therapy flows 0-25lpm (Threaded connector 9/16" – 18 for humidifier)
- 4 = 1/4 "HOSE BARB therapy flows 0-15lpm
- 5 = 1/4 "HOSE BARB therapy flows 0-25lpm
- 6 = therapy flow 0-70lpm (threaded connector 9/16" – 18 for humidifier)
- 7 = 0 – 70 lpm (fir tree)
- 8 = 3/8 BSP 0 – 15 lpm
- 9 = 3/8 BSP 0-25 lpm

INLET TYPES



PIN INDEX



BULLNOSE



BENELUX BULLNOSE



W21.8 1/4"



DIN 477 (G 3/4")



CGA540

Pin Index Yoke
Articulating

OUTLET TYPES



BS SCHRADER



DISS



DIN



AGA



AFNOR



SIS



CZECH



UNIFOR



OHIO



THERAPY TYPES



FIR TREE

9/16" THREADED
THERAPY CONNECTOR3/8" BSP THREADED
THERAPY CONNECTOR

1/4" BARB

For further information or requirements regarding our International Regulators,
please contact a member of the sales team.



SUCTION EQUIPMENT

BNOS Meditech is the exclusive UK distributor for Flow
Meter Italy and their suction range.



EasyVAC® PLUS



Watch the video

- 1 Vacuum Gauge.
- 2 Push Switch on & off Button.
- 3 Suction adjusting knob-push + lock system.
- 4 De-pressure safety valve (for **EASYVAC® PLUS** 250 & 600 only) with anti-clogging system.
- 5 Quick release system for safety jar connection.



The **EasyVAC® PLUS** continuous suction vacuum regulators range is suitable in all medical suction applications in hospitals and nursing homes. The use of **EasySAFE®** safety jar is highly recommended to get a complete suction device able to guarantee total protection of the vacuum regulator and plant.

STRUCTURE

The device is made of a strong techno-polymer body, with a quick I/O switch button, a suction adjustment soft grip inserts knob for an easy handling with a "Push & Lock" position system and a vacuum control gauge with three possible end-of-scale choices: -250 mbar, -600 mbar and -1000 mbar. A protective silicone cover and a techno-polymer support prevent gauge damages caused by possible shocks received during transport or use. The EasyVAC® PLUS vacuum regulators are manufactured with outlet threaded connection for screwing in the usual collection containers for suctioned fluids, or for direct connection to the EasySAFE® PLUS safety jar, through a specific quick release integrated connection. The small sizes of the EasyVAC® PLUS vacuum regulators help in installing multiple sets of medical gas devices into the wall terminal units. The extreme rationality and simplicity, combined with the sophisticated technical execution, allow both operators and patients to appreciate the safety and reliability of this medical device.

	EasyVAC® PLUS 250	EasyVAC® PLUS 600	EasyVAC® PLUS 1000
Part No.	320-0000-00	320-0001-00	320-0002-00
SIZES (LXWXH)	91X106X185 mm	91X106X185 mm	91X106X185 mm
WEIGHT	0.47Kg	0.37Kg	0.37Kg
MAXIMUM SUCTION FLOW	50 L/min. ± 5L/min. At -220 mbar	72 L/min. ± 5L/min. At -550 mbar	115 L/min. ± 5L/min. At -950 mbar
MAXIMUM AVAILABLE NEGATIVE PRESSURE EFFECTIVE VALUE	-220 mbar ± 20 mbar	-550 mbar ± 20 mbar	-950 mbar
OVER DEPRESSION PROTECTING VALVE	Preset with anti-clogging system	Preset with anti-clogging system	N/A
VACUUM GAUGE	0 ÷ - 250 mbar	0 ÷ - 600 mbar	0 ÷ - 1000 mbar
MAX. DEPRESSION SUPPLY VALUE	-950 mbar	-950 mbar	-950 mbar
SUCTION VALUE ADJUSTMENT SYSTEM	With membrane	With membrane	With membrane
STANDARD INLET CONNECTION	BS PROBE	BS PROBE	BS PROBE
OUTLET CONNECTION	ISO G. 1/2" M. + quick release system for EASYSAFE or EASYSAFE PLUS safety jar connection		
I/O SWITCH	Quick push switch button		

EasyVAC®

- 1 Vacuum Gauge.
- 2 Push switch on & off button.
- 3 De-pressure safety valve (for **EASYVAC® PLUS** 250 & 600 only) with anti-clogging system.
- 4 De-pressure safety valve.
- 5 Vacuum outlet G. 1/2" threaded connection integrsted with quick-release connection for **EASYSAFE® PLUS** or **EASYSAFE®** safety jar.

The **EASYVAC®** continuous suction vacuum regulator is particularly suitable for all medical suction applications in hospitals and nursing homes.



STRUCTURE

The device is made of a strong techno-polymer body, with a quick I/O switch-button, a suction adjustment knob and a control vacuum gauge with three possible end-of-scale choices: -250 mbar, -600 mbar and -1000 mbar. A protective silicone cover prevents gauge damages caused by possible shocks received during transport or use. The EASYVAC® vacuum regulators are also designed, through a threaded connection, for connecting directly or indirectly to the normal collection containers for suctioned fluids or for direct connection to the EASYSAFE® safety jar, through a specific quick release integrated connection. The extreme rationality and simplicity, combined with the sophisticated technical execution, allow both operators and patients to appreciate the safety and reliability of this medical device.

	EasyVAC® 250	EasyVAC® 600	EasyVAC® 1000
Part No.	320-0003-00	320-0004-00	320-0005-00
SIZES (LXWXH)	103X92X170 mm	103X92X170 mm	103X92X170 mm
WEIGHT	0.42Kg	0.37Kg	0.37Kg
MAXIMUM SUCTION RATE	50 L/min. ± 5L/min. At -220 mbar	72 L/min. ± 5L/min. At -550 mbar	115 L/min. ± 5L/min. At -950 mbar
MAXIMUM ADJUSTABLE DEPRESSION	-220 mbar ± 20 mbar	-550 mbar ± 20 mbar	-950 mbar
VALVE PROTECTING AGAINST EXCESSIVE NEGATIVE PRESSURES	Preset with anti-clogging system	Preset with anti-clogging system	N/A
MAXIMUM SUPPLY DEPRESSION	-950 mbar	-950 mbar	-950 mbar
SUCTION ADJUSTING SYSTEM	With membrane	With membrane	With membrane
STANDARD VACUUM SUPPLY CONNECTION	BS PROBE	BS PROBE	BS PROBE
OUTLET CONNECTION	ISO G. 1/2" M. + quick release system for EASYSAFE or EASYSAFE PLUS safety jar connection		
I/O SWITCH	Quick push button type		

AV & EASY AIR®

VENTURI SUCTION UNITS

The Venturi AV/500 and EasyAIR® vacuum generating system units are particularly suitable in all hospital applications in which it is necessary to get values of vacuum up to -850 mbar and where a central facility of vacuum generation for suction is missing, often for technical choice.

AV/500



EasyAIR® 1000



AV/500

As it is well known, the physical principle called “Venturi” allows depression from a fluid under pressure, which is obtained, in case of these devices, using medical compressed air coming from the centralized distribution plant. Such devices are composed essentially of a brass chrome-plated body, a needle valve with vacuum adjustment knob and a vacuum gauge. The AV/500 has a protective silicone cover on the vacuum gauge to avoid damages caused by possible impacts during transport or use.

EasyAIR®

Such devices are made essentially of an aluminum body housed inside a techno-polymer shockproof shell to protect the unit. Inside, over the “Venturi effect” generating assembly, the needle valve for vacuum adjustment is driven by a large ergonomic control knob having a Push&Lock system, to keep locked the preset vacuum value, and Soft Grip inserts for easy handling and adjusting. The vacuum gauge is available in two end of scale options depending on model (-250 mbar or -1000 mbar) and it is housed in the structure to prevent damages caused by possible shocks received during transport or use.

	AV/500	EasyAIR® 1000
Part No.	320-0006-00	320-0007-00
SIZES (LXWXH)	92X72X100 mm	89x123x141 mm
WEIGHT	0.50Kg	0.57Kg
MAX. SUCTION RANGE	40 L/min + 5%	40 L/min + 5L/min. at -800 MBAR
VACUUM GAUGE SCALE	0 ÷ 1000 MBAR	0 ÷ 1000 MBAR
MAXIMUM ADJUSTABLE DEPRESSION (WITH PLATE PRESSURE ± 10%)	-800 MBAR/hPa -25 MBAR/hPa	-800 MBAR-25 MBAR
GAS AND SUPPLY PRESSURE (STANDARD VERSION)	compressed air 400 kPa (4.0 bar) ± 10%	compressed air 400 kPa (4.0 bar) ± 10%
ADJUSTMENT OF SUCTION LEVEL	Needle valve	N/A
AIR CONSUMPTION AT THE MAX. SUCTION VALUE	60 L/min ± 2L/min	60 L/min ± 2L/min
INLET CONNECTION	BS PROBE	BS PROBE
OUTLET CONNECTION	ISO G. 1/2" M. + quick release system for EASYSAFE or EASYSAFE PLUS safety jar connection	

CTS UNITS

CTS UNIT, THERAPY ONLY



Part No.
PIN INDEX: 740-0000-00
BULLNOSE: 740-1000-00

- Combined Oxygen Therapy and Venturi Suction in a single package
- Different flow rates available: 0-15lpm & 0-25lpm

CTS UNIT, THERAPY, 1 X BS SCHRADER



Part No.
PIN INDEX: 740-0001-00
BULLNOSE: 740-1001-00

- Combined Oxygen Therapy and Venturi Suction in a single package
- Different flow rates available: 0-15lpm & 0-25lpm
- Supplied with a BS Schrader Outlet (4-BAR)

21

CTS SPLITTER UNIT



UNIT
Click Stop:
Bobbin Style:

Part No.
740-2000-00
740-2200-00

- Combined Oxygen Therapy and Venturi Suction in a single package
- Available with a Click Stop or Bobbin Flow Meter
- Any hose length available

CTS SPLITTER UNIT - COMPACT



UNIT
Click Stop:
Bobbin Style:

Part No.
740-2100-00
740-2300-00

- Combined Oxygen Therapy and Venturi Suction in a single package
- Available with a Click Stop or Bobbin Flow Meter
- Any hose length available
- Compact length version

EasySAFE® PLUS



Part No.
320-0008-00

The EasySAFE® PLUS is a safety jar used to protect equipment and the plant upstream, should the overflow valve in the main container not be working properly. It's equipped with an overflow floating valve and a housing designed to fit an antibacterial filter to guarantee the complete suction system protection against any contamination. It is autoclavable with a capacity of 50ml. EasySAFE® PLUS offers quick 1/12" turn to speed up the jar cleaning & antibacteria filter replacement.

EasySAFE®



Part No.
320-0009-00

The EasySAFE® is a safety jar used to protect equipment and the plant upstream, should the overflow valve in the main container not be working properly. It's equipped with an overflow floating valve and a housing designed to fit an antibacterial filter to guarantee the complete suction system protection against any contamination. It is autoclavable with a capacity of 50ml.

COLLECTION CONTAINERS
FOR SMALL QUANTITY OF FLUIDS



Capacity	Part No.
300 ml	320-0010-00
500 ml	320-0011-00
300ml (antibacteria)	320-0021-00
500ml (antibacteria)	320-0022-00

The collection containers are used for the collection of small volumes of suctioned fluids and have been designed and manufactured for application of "high flow and high vacuum"

- Volumes; 300ml & 500ml
- Autoclavable

COLLECTION CONTAINERS
FOR LARGE QUANTITY OF FLUIDS



Capacity	Part No.
1000 ml	320-0012-00
2000 ml	320-0013-00
4000 ml	320-0014-00

The collection containers are used for the collection of small volumes of suctioned fluids and have been designed and manufactured for application of "high flow and high vacuum"

- Volumes; 1000ml, 2000ml & 4000ml
- Autoclavable

PVC TUBING



Size	Part No.
30M Roll (Yellow)	320-0037-00
30M Roll (Clear)	320-0038-00

SILICONE TUBING



Size	Part No.
Per metre	320-0018-00
30M Roll	320-0019-00

TUBING NIPPLE



Part No. 320-0069-00
• For Venturi Suction Unit

SUCTION TROLLEY
INCLUDING SUCTION REGULATOR



For more information,
please contact a member
of our sales team.

SUPPORT BASKET
FOR COLLECTION JARS



Capacity	Part No.
1000ml	320-0015-00
2000ml	320-0016-00
4000ml	320-0017-00

ANTIBACTERIA FILTER
FOR EASYSAFE



Part No.
320-0020-00 (100 per pack)
320-0020-99 (Single Unit)

CATHETER MOUNT CONTAINER



Size	Part No.
Single	320-0086-00
Twin	320-0099-00

CATHETER MOUNT CLAMP



Size	Part No.
Single	320-0687-00
Twin	320-0100-00

WALL BRACKETS & CLAMPS



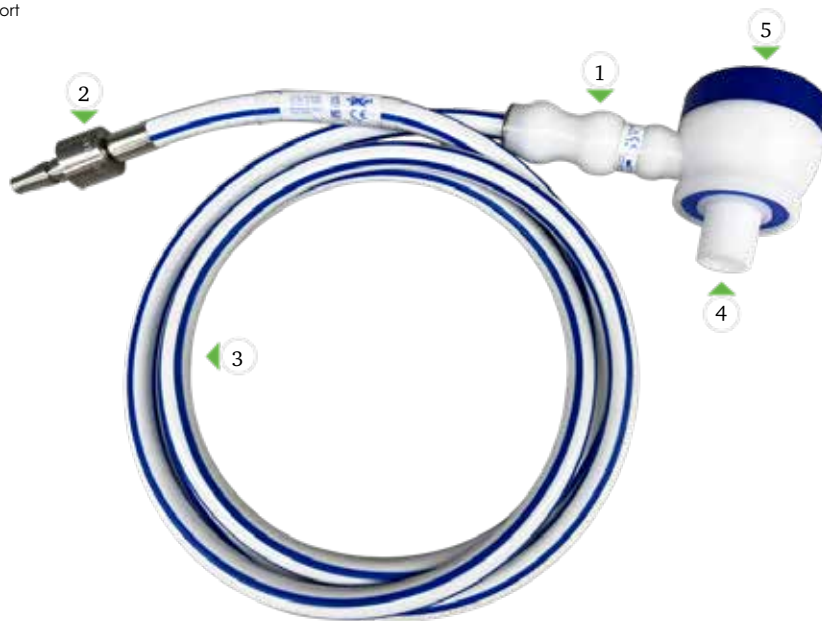
There are a variety of wall brackets & clamps
available, please contact a member of the
sales team for more information.





DEMAND VALVE

- 1 Handle
- 2 BS Schrader Probe
- 3 Medical Gas Supply Hose
- 4 Patient Connection Port
- 5 Push / flush blutton



Each Demand Valve is available with the hose fittings shown below. Other fittings available upon request.



Our range of Demand Valves are the most robust devices on the market to date and they have been designed to be lightweight, compact and to be used with generic filter systems. The devices deliver exceptionally high peak flow rates with low inspiratory effort and avoids cross contamination to ensure minimal effort is required by the patient.

All of our demand valves can be supplied with a dedicated pressure regulator or with any international hose fitting to use with your own cylinder or wall supply.

ANALGESIC DEMAND VALVE



Part No.
900-0021-00 (2M HOSE)
900-0031-00 (3M HOSE)
900-0041-00 (4M HOSE)

- Any hose length and probe type available
- Full length handle
- 7 Year Warranty
- 5 Year service
- 10 year intended life-span

OXYGEN DEMAND VALVE



Part No.
910-0021-00 (2M HOSE)
910-0031-00 (3M HOSE)
910-0041-00 (4M HOSE)

- Any hose length and probe type available
- Full length handle
- 7 Year Warranty
- 5 Year service
- 10 year intended life-span

OXYGEN DEMAND VALVE (NO HANDLE)



Part No.
910-0027-00

Our Oxygen Demand Valve with no handle has been designed to work with BVM resuscitators to eliminate any wasted Oxygen.

WRIST BAND



GAS	Part No.
O2	131-0397-00
N2O/O2	131-0396-00

EXPIRATION AGSS DIVERter



Part No.
674-0008-00

Expiration AGSS Diverter attaches to Demand Valve for scavaging exhaled gas.

DEMAND VALVE TO BVM ADAPTOR



AMBU®
Part No.
673-0636-00

LAERDAL®
Part No.
673-0673-00

BACTERIAL FILTER/MOUTH PIECE



Part No.
673-9021-00

Single use bacterial mouth pieces used to avoid cross contamination. To be used with our Analgesic® and Oxygen demand valves.



FLOW SELECTORS



- ① Therapy Flow Rate Selector (0-1lpm, 0-3lpm, 0-15lpm, 0-25lpm or 0-70lpm)
- ② Therapy Outlet (fir tree) connector
- ③ Inlet (BS Schrader Probe)

THERAPY OUTLET TYPES



FIR TREE



9/16th THREADED
THERAPY CONNECTOR



3/8" BSP THREADED
THERAPY
CONNECTOR



1/4" BARB



Available Flow Selector Gases

- Oxygen (O₂)
- Medical Air (MA4)
- Analgesic® (N₂O/O₂)

Our medical flow selector offers various options for all medical applications, from neonatal care through to adults. We offer a comprehensive combination of inlet and outlet connections to meet the needs of any local market requirements or standards.

Designed to deliver precise rates without the need for any calibration and all units come with a 7 year warranty.

FLOW SELECTOR, BS SCHRADER PROBE

lpm	Part No.
0-15	673-0506-00
0-25	673-0506-01
0-70	673-0070-00

- Flow selector with multiple flow therapy outlet set by selector dial – ½, 1,2,3,4,6,8,10,15,25 and 70 lpm
- Designed for use with a 4 bar Oxygen supply
- Available with left angle probe.
- Available with any international probe type.

FLOW SELECTOR WITH EXTENDED BS SCHRADER PROBE

lpm	Part No.
0-15	673-0585-00
0-25	673-0585-01
0-70	673-0071-00

- Flow selector with multiple flow therapy outlet set by selector dial – ½, 1,2,3,4,6,8,10,15,25 and 70 lpm
- Designed for use with a 4 bar Oxygen supply
- Available with left angle probe.
- Available with any international probe type.

RAIL MOUNTED SINGLE FLOW SELECTOR, WITH 2M HOSE ASSEMBLY, BS PROBE

lpm	Part No.
0-15	673-2003-00
0-25	673-2004-00
0-70	673-2001-00

- Single Flow Selector, Rail Mounted, with 2M supply hose
- Flow selector with multiple flow therapy outlet set by selector dial – ½, 1,2,3,4,6,8,10,15,25 and 70 lpm
- Designed for use with a 4 bar Oxygen supply
- Also available with different international probe types

TWIN FLOW SELECTOR, WITH DIRECT BS PROBE

lpm	Part No.
0-15	710-0106-22
0-25	710-0106-23
0-70	710-0106-24

- Twin Flow Selector with direct BS Probe
- Flow selector with multiple flow therapy outlet set by selector dial – ½, 1,2,3,4,6,8,10,15,25 and 70 lpm
- Designed for use with a 4 bar Oxygen supply
- Also available with different international probe types

TWIN FLOW SELECTOR, TWIN ADAPTOR WITH BS PROBE

lpm	Part No.
0-15	710-0108-22
0-25	710-0108-23
0-70	710-0108-24

- Twin Flow Selector, Twin Adaptor with direct BS Probe
- Flow selector with multiple flow therapy outlet set by selector dial – ½, 1,2,3,4,6,8,10,15,25 and 70 lpm
- Designed for use with a 4 bar Oxygen supply
- Also available with different international probe types

RAIL MOUNTED TWIN FLOW SELECTOR, WITH 2M HOSE ASSEMBLY, BS PROBE

lpm	Part No.
0-15	710-0107-22
0-25	710-0107-23
0-70	710-0107-24

- Twin Flow Selector, Rail Mounted, with 2M supply hose
- Flow selector with multiple flow therapy outlet set by selector dial – ½, 1,2,3,4,6,8,10,15,25 and 70 lpm
- Designed for use with a 4 bar Oxygen supply
- Also available with different international probe types

**TWIN FLOW SELECTOR, STRAIGHT BAR
– 100mm – BS PROBE**



lpm	Part No.
0-15	710-0109-22
0-25	710-0109-23
0-70	710-0109-24

- Flow selector with multiple flow therapy outlet set by selector dial – ½, 1,2,3,4,6,8,10,15,25 and 70 lpm
- Designed for use with a 4 bar Oxygen supply
- Also available with different international probe types.

**TWIN FLOW SELECTOR, RAIL MOUNTED, STRAIGHT
BAR – 100mm – 2M SUPPLY HOSE, BS PROBE**



lpm	Part No.
0-15	710-0110-22
0-25	710-0110-23
0-70	710-0110-24

- Flow selector with multiple flow therapy outlet set by selector dial – ½, 1,2,3,4,6,8,10,15,25 and 70 lpm
- Designed for use with a 4 bar Oxygen supply
- Also available with different international probe types.

**STRAIGHT BAR, FLOW SELECTOR + BS SCHRADER
OUTLET – DIRECT BS PROBE – 100mm**



lpm	Part No.
0-15	673-3000-00
0-25	673-3001-00
0-70	673-3002-00

- Flow Selector with multiple flow therapy outlet set by selector dial – ½, 1,2,3,4,6,8,10,15,25 and 70 lpm
- Designed for use with a 4 bar Oxygen supply
- Also available with different international probe types.

**STRAIGHT BAR, RAIL MOUNTED, FLOW SELECTOR +
BS SCHRADER OUTLET – 2M SUPPLY HOSE, BS PROBE
–100mm**



lpm	Part No.
0-15	673-3003-00
0-25	673-3004-00
0-70	673-3005-00

- Flow selector with multiple flow therapy outlet set by selector dial – ½, 1,2,3,4,6,8,10,15,25 and 70 lpm
- Designed for use with a 4 bar Oxygen supply
- Also available with different international probe types.

TWIN FLOW SELECTOR WITH 2M SUPPLY HOSE FITTED WITH BS SCHRADER PROBE



lpm	Part No.
0-15	710-0101-22*
0-25	710-0101-23*
0-70	710-0101-24*

- Twin outlet fittings are $\frac{1}{8}$ " thread. $\frac{3}{8}$ " also available
- The unit has a wall mounting plate allowing fixing to a wall or bulkhead by screws or bolts.
- Available with any international probe type.

**Humidifiers to be purchased separately.*

**RAIL MOUNT OPTION ALSO AVAILABLE
UPON REQUEST**

4-WAY FLOW SELECTOR ON STAND-MOUNT, BS SCHRADER PROBE, 2M SUPPLY HOSE



lpm	Part No.
0-15	673-0834-00
0-25	673-0835-00
0-70	673-0870-00

- Flow selector with multiple flow therapy outlet set by selector dial – $\frac{1}{2}$, 1,2,3,4,6,8,10,15,25 and 70lpm
- Designed for use with a 4 bar Oxygen supply
- Also available with left angle probe.
- Also available with different international hose fittings.

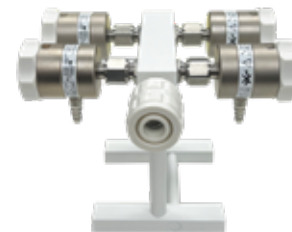
4 WAY FLOW SELECTOR AND FRAME, BS SCHRADER PROBE ON 2M SUPPLY HOSE



lpm	Part No.
0-15	673-0534-00
0-25	673-0534-01
0-70	673-0534-07

- 55SL 4-way flow selector with frame
- Flow selector with multiple flow therapy outlet set by selector dial – $\frac{1}{2}$, 1,2,3,4,6,8,10,15,25 and 70 lpm
- Designed for use with a 4 bar Oxygen supply
- Approximate dimensions 460 X 210 X 210mm
- Also available with different international hose fittings.

4-WAY FLOW SELECTOR ON STAND MOUNT,BS CHECK UNIT



lpm	Part No.
0-15	673-0934-00
0-25	673-0935-00
0-70	673-0970-00

- Flow selector with multiple flow therapy outlet set by selector dial – $\frac{1}{2}$, 1,2,3,4,6,8,10,15,25 and 70 lpm
- Designed for use with a 4 bar Oxygen supply
- Also available with different international hose fittings.

**BOBBIN STYLE FLOW SELECTOR
-BS PROBE**

Gas	lpm	Part No.
O ₂	0-1	812-0003-00
O ₂	0-4	812-0004-00
O ₂	0-15	812-0000-00
O ₂	0-30	812-0001-00
O ₂	0-50	812-0002-00

Gas	lpm	Part No.
MA4	0-1	813-0003-00
MA4	0-4	813-0004-00
MA4	0-15	813-0000-00
MA4	0-30	813-0001-00
MA4	0-50	813-0002-00

- Designed for use with a 4 bar Oxygen supply
- Also available with different international probe types

**BOBBIN STYLE FLOW SELECTOR
-BS PROBE - RAIL MOUNTED**

Gas	lpm	Part No.
O ₂	0-1	710-0110-29
O ₂	0-4	710-0110-30
O ₂	0-15	710-0110-31
O ₂	0-30	710-0110-32
O ₂	0-50	710-0110-33

Gas	lpm	Part No.
MA4	0-1	710-0130-33
MA4	0-4	710-0130-34
MA4	0-15	710-0130-35
MA4	0-30	710-0130-36
MA4	0-50	710-0130-37

- Designed for use with a 4 bar Oxygen supply
- Also available with different international probe types

**BOBBIN STYLE FLOW SELECTOR
WITH SPLITTER -DIRECT PROBE**

Gas	lpm	Part No.
O ₂	0-1	710-0113-00
O ₂	0-4	710-0114-00
O ₂	0-15	710-0111-00
O ₂	0-30	710-0115-00
O ₂	0-50	710-0116-00

Gas	lpm	Part No.
MA4	0-1	710-0117-00
MA4	0-4	710-0118-00
MA4	0-15	710-0119-00
MA4	0-30	710-0120-00
MA4	0-50	710-0121-00

- Designed for use with a 4 bar Oxygen supply
- Also available with different international probe types

**DUAL FLOW BOBBIN STYLE
FLOW SELECTOR - BS PROBE**

Gas	lpm	Part No.
O ₂	0-1	814-0003-00
O ₂	0-4	814-0004-00
O ₂	0-15	814-0000-00
O ₂	0-30	814-0001-00
O ₂	0-50	814-0002-00

Gas	lpm	Part No.
MA4	0-1	815-0003-00
MA4	0-4	815-0004-00
MA4	0-15	815-0000-00
MA4	0-30	815-0001-00
MA4	0-50	815-0002-00

- Designed for use with a 4 bar Oxygen supply
- Also available with different international probe types

**DUAL FLOW BOBBIN STYLE FLOW
SELECTOR - BS PROBE - RAIL MOUNTED**

Gas	lpm	Part No.
O ₂	0-1	710-0110-34
O ₂	0-4	710-0110-25
O ₂	0-15	710-0110-28
O ₂	0-30	710-0110-26
O ₂	0-50	710-0110-27

Gas	lpm	Part No.
MA4	0-1	710-0130-38
MA4	0-4	710-0130-39
MA4	0-15	710-0130-40
MA4	0-30	710-0130-41
MA4	0-50	710-0130-42

- Designed for use with a 4 bar Oxygen supply
- Also available with different international probe types

Create a Bobbin Style Flow Selector to suit your specific requirements by following the steps below to generate your **BOBBIN STYLE FLOW SELECTOR PART NUMBER**.

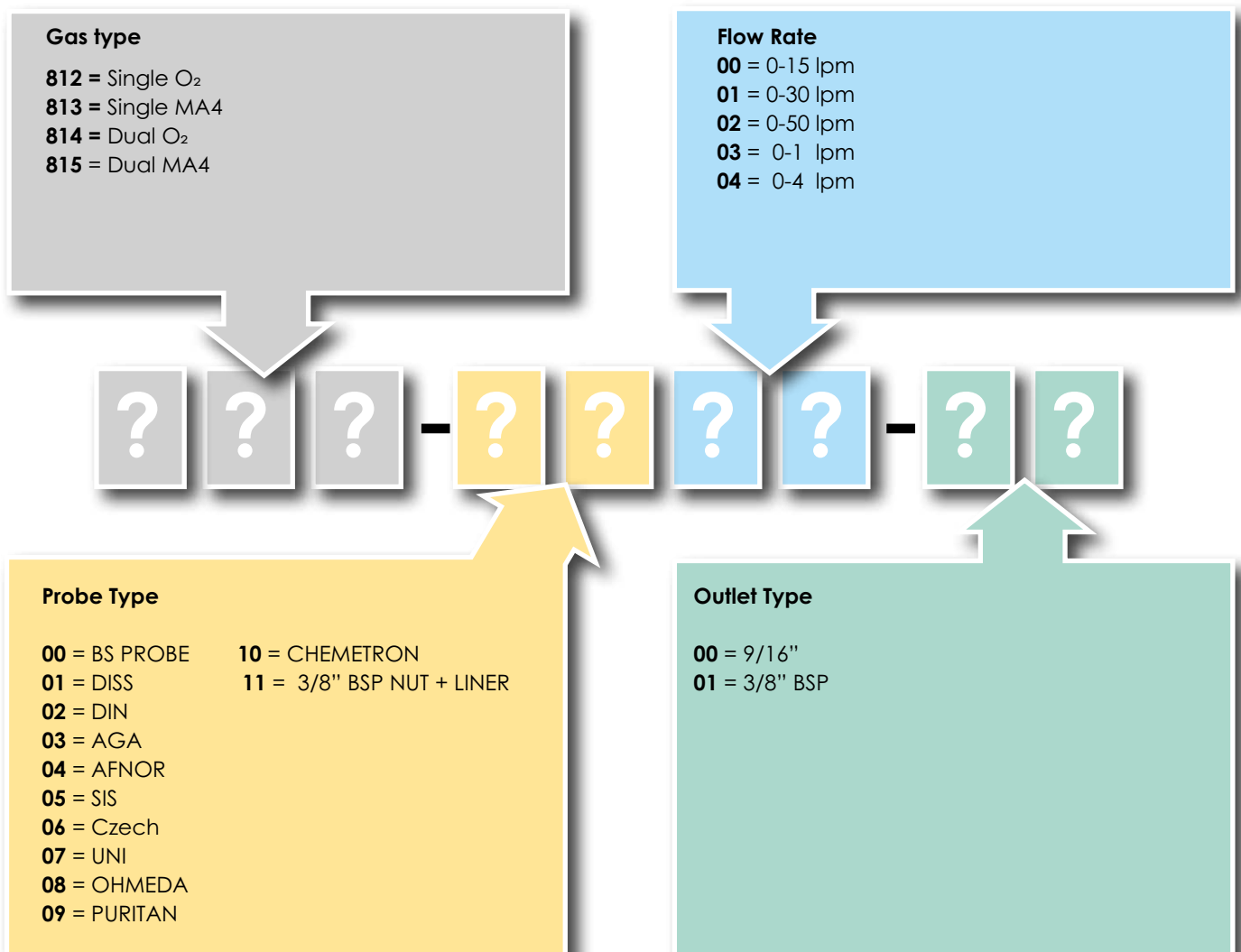
STEP 1 Choose the **GAS TYPE** that you require

STEP 2 Choose the **PROBE TYPE** you require

STEP 3 Choose the **FLOW RATE** you require

STEP 4 Choose the **OUTLET TYPE** you require

BOBBIN STYLE PART NUMBERING SYSTEM



LOW FLOW SELECTOR, BS SCHRADER PROBE



GAS	lpm	Part No.
O ₂	0-1	673-0503-00
MA4	0-1	673-1503-00

- Multiple micro-flow rates set by selector dial.
- 0.01, 0.02, 0.03, 0.04, 0.05, 0.06, 0.07, 0.08, 0.09, 0.10 & 1 lpm.
- Designed for use with a 4 bar Oxygen supply
- Available with any international probe type.
- Available with any Outlet type.

LOW FLOW SELECTOR, BS SCHRADER PROBE



GAS	lpm	Part No.
O ₂	0-3	673-0502-00
MA4	0-3	673-1502-00

- Multiple micro-flow rates set by selector dial.
- 0.02, 0.03, 0.05, 0.08, 0.12, 0.20, 0.30, 0.50, 0.75, 1 & 3 lpm.
- Designed for use with a 4 bar Oxygen supply
- Available with any international probe type.
- Available with any outlet type.

PROBE TYPE



BS PROBE



DISS



DIN



AGA



AFNOR



SIS



CZECH



UNI



OHMEDA



OUTLET TYPES



PURITAN



CHEMETRON

3/8" BSP Nut +
Liner1/4" THREADED
THERAPY
CONNECTOR3/8" BSP THREADED
THERAPY
CONNECTOR

Each Bobbin Style & Low Flow Selector is available with the probe types and outlet types shown. If either the probe type or outlet type you require is not shown, please contact us to discuss your requirements.

HUMIDIFIER (single use or auto-clavable)



Single unit - single use
Part No.
674-0047-00

Auto-clavable
Part No.
674-0110-00

- Single-patient use / Auto-clavable
- Designed for long term durability
- With 350ml capacity
- Audible Safety pop alarm & a quad nut connector.
- Clear markings of maximum water level indicator

Carton of 60 (single use)
Part No.
674-0047-60

THERAPY OUTLET ADAPTER



3/8" UNF TO 3/8" BSP
Part No.
177-1029-03

3/8" UNF to 1/2" BSP
Part No.
177-1040-00

3/8" BSP TO 3/8" UNF
Part No.
177-1053-00

- Screw on adapter for threaded therapy outlets
- Made from stainless steel
- Includes sealing O-rings

HIGH CONCENTRATED THERAPY MASK



Adult Part No.
673-9006-00

Child Part No.
673-9007-00

- Oxygen therapy mask in PVC with PE connector
- Including 2m Oxygen tubing
- Elasticated adjustable head strap
- PE reservoir bag
- Single patient use.

SINGLE USE BAG VALVE MASK



Adult Part No.
673-0564-00

Child Part No.
673-0565-00

- Adult BVM resuscitation system with 1L bag with a pressure relief valve (40cm H₂O).
- Child BVM resuscitation system with 550ml bag with a pressure relief valve (40cm H₂O).
- Both come with 3m oxygen tubing
- Both come with oxygen reservoir bag with rapid bag recoil.

THERAPY OUTLET FIR TREE – METAL



3/8" UNF
Part No.
674-0137-00

3/8" BSP
Part No.
674-0103-00

- Made from stainless steel
- Includes sealing O-rings
- Thread Type – 3/8" UNF or 3/8" BSP

HOSE BARB CONVERTER (PLASTIC)



Part No.
674-0079-00 (pack of 10)
674-0079-01 (pack of 1)

Plastic converter, screws onto 3/8" thread and converts to fir tree style connector to accept plastic therapy hose.

NASAL CANNULA



ADULT
Part No.
674-0086-00

CHILD
Part No.
674-0113-00

- Nasal cannula with straight prongs + tube (1.8M)



GAS SPECIFIC ADAPTORS



- 1 Inlet (BS Probe)
- 2 Outlet (BS Schrader)



Each Gas Specific Adaptor is available with the probe types and / or the outlet types shown below. Other types are available upon request.

PROBE TYPE



OUTLET TYPES



For use in all Hospital and Emergency environments, Gas Specific Adaptors are designed to be plugged into a Medical Oxygen Wall Outlet or a 4 BAR Regulator Outlet. Its been designed to give the user two 4BAR outlets rather than one.

**STRAIGHT BAR TWIN ADAPTOR
BS SCHRADER – BS PROBE**



Gas	Part No.
O ₂	673-9025-00
MA4	673-9025-01
SA7	673-9025-02
O ₂ /N ₂ O	673-9025-03
N ₂ O	673-9025-04
Vacuum	673-9025-05
CO ₂	673-9025-06

- 100mm Straight Bar (50mm available upon request)
- Designed for use with a 4 bar Oxygen supply
- Also available with different international outlet + probe types.

**TWIN ADAPTOR – BS SCHRADER
BS PROBE**



Gas	Part No.
O ₂	673-9045-00
MA4	673-9045-01
SA7	673-9045-02
O ₂ /N ₂ O	673-9045-03
N ₂ O	673-9045-04
Vacuum	673-9045-05
CO ₂	673-9045-06

- Designed for use with a 4 bar Oxygen supply
- Also available with different international outlet + probe types.

**THREE WAY ADAPTOR
- BS SCHRADER - BS PROBE**



Gas	Part No.
O ₂	673-9200-00
MA4	673-9201-00
SA7	673-9202-00
O ₂ /N ₂ O	673-9203-00
N ₂ O	673-9204-00
Vacuum	673-9205-00
CO ₂	673-9206-00

- 100mm Straight Bar (50mm available upon request)
- Designed for use with a 4 bar Oxygen supply
- Also available with different international outlet + probe types.

**BS PROBE – TWIN BS SCHRADER
ADAPTOR – BAR HOSE ASSEMBLY**



GAS	Part No.
O ₂	673-9058-00
O ₂ /N ₂ O	673-9059-00
CO ₂	673-9088-00
N ₂ O	673-9060-00
SA7	673-9061-00
MA4	673-9062-00
VACUUM	673-9063-00

- 100mm bar Twin BS Schrader
- British Standard (other standards available upon request)
- 3M Hose

**BS PROBE – TWIN BS SCHRADER
ADAPTOR – BAR HOSE
ASSEMBLY + RAIL MOUNT**



GAS	Part No.
O ₂	673-9064-00
O ₂ /N ₂ O	673-9065-00
CO ₂	673-9089-00
N ₂ O	673-9066-00
SA7	673-9067-00
MA4	673-9068-00
VACUUM	673-9069-00

- 100mm bar Twin BS Schrader
- British Standard (other standards available upon request)
- 3M Hose
- Rail Mounted

**BS PROBE – TWIN BS SCHRADER
ADAPTOR HOSE ASSEMBLY**



GAS	Part No.
O ₂	673-9070-00
O ₂ /N ₂ O	673-9071-00
CO ₂	673-9090-00
N ₂ O	673-9072-00
SA7	673-9073-00
MA4	673-9074-00
VACUUM	673-9075-00

- Twin BS Schrader Adaptor
- British Standard (other standards available upon request)
- 3M Hose

**BS PROBE – SINGLE BS SCHRADER + RAIL
MOUNT HOSE ASSEMBLY**



GAS	Part No.
O ₂	673-9076-00
O ₂ /N ₂ O	673-9077-00
CO ₂	673-9091-00
N ₂ O	673-9078-00
SA7	673-9079-00
MA4	673-9080-00
VACUUM	673-9081-00

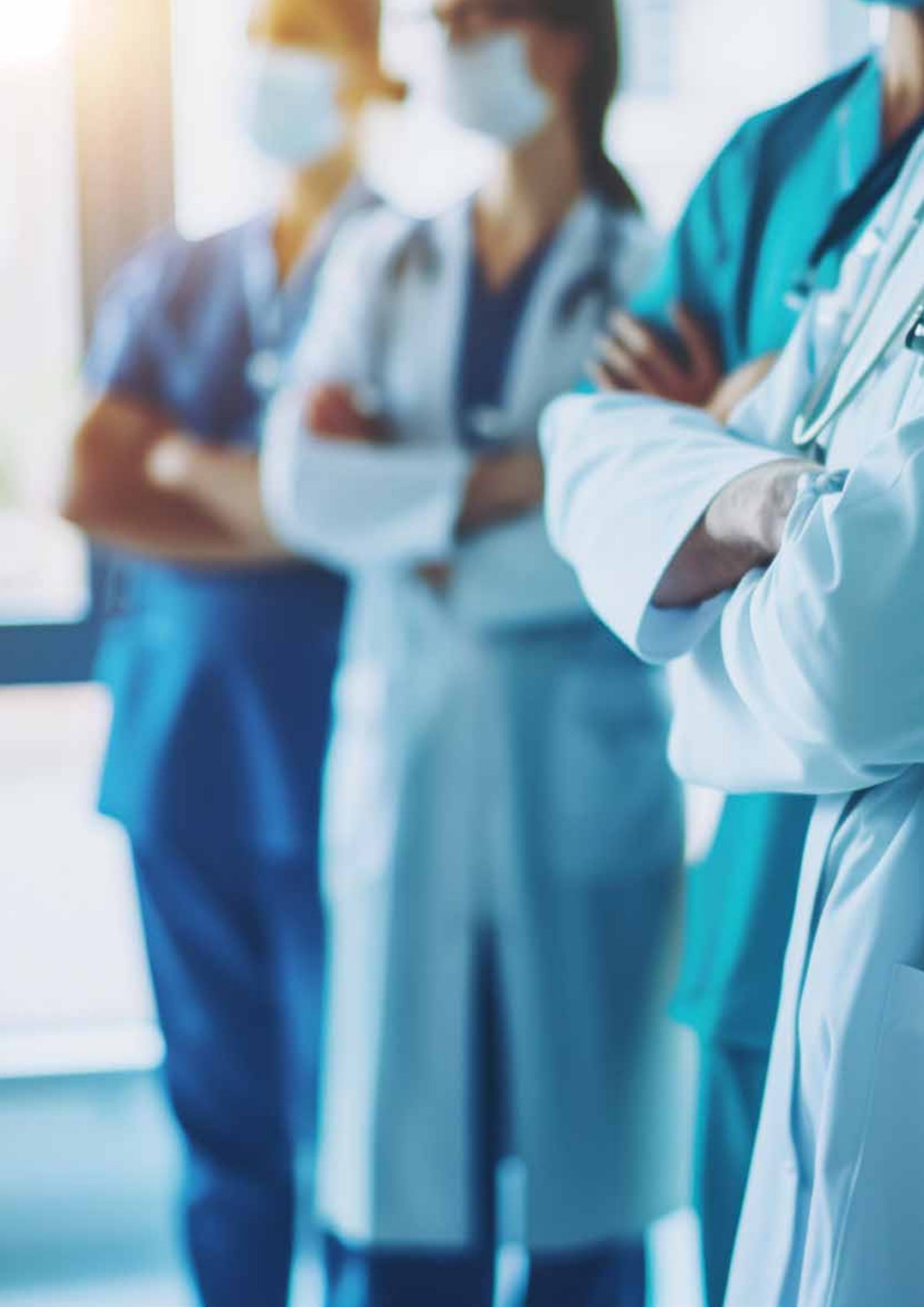
- Single BS Schrader
- British Standard (other standards available upon request)
- 3M Hose

**BS PROBE – TWIN BS SCHRADER + RAIL
MOUNT HOSE ASSEMBLY**



GAS	Part No.
O ₂	673-9082-00
O ₂ /N ₂ O	673-9083-00
CO ₂	673-9092-00
N ₂ O	673-9084-00
SA7	673-9085-00
MA4	673-9086-00
VACUUM	673-9087-00

- Twin BS Schrader Adaptor
- British Standard (other standards available upon request)
- 3M Hose
- Rail Mounted



MEDICAL GAS HOSES



BS PROBE + BS SCHRADER



GAS	Part No.
CO ₂	157-0002-00
O ₂	151-0002-00
O ₂ /N ₂ O	152-0002-00
N ₂ O	153-0002-00
MA7	154-0002-00
MA4	155-0002-00
VACUUM	156-0002-00

BS PROBE (90°) + BS SCHRADER



GAS	Part No.
CO ₂	157-0102-00
O ₂	151-0102-00
O ₂ /N ₂ O	152-0102-00
N ₂ O	153-0102-00
MA7	154-0102-00
MA4	155-0102-00
VACUUM	156-0102-00

DISS NUT + TAIL + BS SCHRADER



GAS	Part No.
CO ₂	157-1402-00
O ₂	151-1402-00
O ₂ /N ₂ O	152-1402-00
N ₂ O	153-1402-00
MA7	154-1402-00
MA4	155-1402-00
VACUUM	156-1402-00

DISS NUT + TAIL (90°) + BS SCHRADER



GAS	Part No.
CO ₂	157-1502-00
O ₂	151-1502-00
O ₂ /N ₂ O	152-1502-00
N ₂ O	153-1502-00
MA7	154-1502-00
MA4	155-1502-00
VACUUM	156-1502-00

NIST PROBE + NUT + BS SCHRADER



GAS	Part No.
CO ₂	157-0202-00
O ₂	151-0202-00
O ₂ /N ₂ O	152-0202-00
N ₂ O	153-0202-00
MA7	154-0202-00
MA4	155-0202-00
VACUUM	156-0202-00

NIST PROBE (90°) + BS SCHRADER



GAS	Part No.
CO ₂	157-0302-00
O ₂	151-0302-00
O ₂ /N ₂ O	152-0302-00
N ₂ O	153-0302-00
MA7	154-0302-00
MA4	155-0302-00
VACUUM	156-0302-00

BS PROBE + DISS NUT + TAIL



GAS	Part No.
CO ₂	157-0002-09
O ₂	151-0002-09
O ₂ /N ₂ O	152-0002-09
N ₂ O	153-0002-09
MA7	154-0002-09
MA4	155-0002-09
VACUUM	156-0002-09

BS PROBE (90°) + DISS NUT + TAIL



GAS	Part No.
CO ₂	157-0102-09
O ₂	151-0102-09
O ₂ /N ₂ O	152-0102-09
N ₂ O	153-0102-09
MA7	154-0102-09
MA4	155-0102-09
VACUUM	156-0102-09

BS PROBE + DISS NUT + TAIL (90°)



GAS	Part No.
CO ₂	157-0002-13
O ₂	151-0002-13
O ₂ /N ₂ O	152-0002-13
N ₂ O	153-0002-13
MA7	154-0002-13
MA4	155-0002-13
VACUUM	156-0002-13

BS PROBE + NIST PROBE + NUT



GAS	Part No.
CO ₂	157-0002-01
O ₂	151-0002-01
O ₂ /N ₂ O	152-0002-01
N ₂ O	153-0002-01
MA7	154-0002-01
MA4	155-0002-01
VACUUM	156-0002-01

BS PROBE (90°) + NIST PROBE + NUT



GAS	Part No.
CO ₂	157-0102-01
O ₂	151-0102-01
O ₂ /N ₂ O	152-0102-01
N ₂ O	153-0102-01
MA7	154-0102-01
MA4	155-0102-01
VACUUM	156-0102-01

BS PROBE-NIST PROBE + NUT (90°)



GAS	Part No.
CO ₂	157-0002-02
O ₂	151-0002-02
O ₂ /N ₂ O	152-0002-02
N ₂ O	153-0002-02
MA7	154-0002-02
MA4	155-0002-02
VACUUM	156-0002-02

BS PROBE -3/8" BSP NUT



GAS	Part No.
CO ₂	157-0002-14
O ₂	151-0002-14
O ₂ /N ₂ O	152-0002-14
N ₂ O	153-0002-14
MA7	154-0002-14
MA4	155-0002-14
VACUUM	156-0002-14

BS PROBE (90°) + 3/8" BSP NUT



GAS	Part No.
CO ₂	157-0102-14
O ₂	151-0102-14
O ₂ /N ₂ O	152-0102-14
N ₂ O	153-0102-14
MA7	154-0102-14
MA4	155-0102-14
VACUUM	156-0102-14

BS PROBE + 3/8" BSP NUT (90°)



GAS	Part No.
CO ₂	157-0002-15
O ₂	151-0002-15
O ₂ /N ₂ O	152-0002-15
N ₂ O	153-0002-15
MA7	154-0002-15
MA4	155-0002-15
VACUUM	156-0002-15

45

BS PROBE + BS PROBE



GAS	Part No.
CO ₂	157-0002-16
O ₂	151-0002-16
O ₂ /N ₂ O	152-0002-16
N ₂ O	153-0002-16
MA7	154-0002-16
MA4	155-0002-16
VACUUM	156-0002-16

NIST PROBE + NUT + NIST PROBE + NUT



GAS	Part No.
CO ₂	157-0202-01
O ₂	151-0202-01
O ₂ /N ₂ O	152-0202-01
N ₂ O	153-0202-01
MA7	154-0202-01
MA4	155-0202-01
VACUUM	156-0202-01

DISS NUT + TAIL + DISS NUT + TAIL



GAS	Part No.
CO ₂	157-1402-09
O ₂	151-1402-09
O ₂ /N ₂ O	152-1402-09
N ₂ O	153-1402-09
MA7	154-1402-09
MA4	155-1402-09
VACUUM	156-1402-09

3/8" BSP NUT - 3/8" BSP NUT



GAS	Part No.
CO ₂	157-1602-14
O ₂	151-1602-14
O ₂ /N ₂ O	152-1602-14
N ₂ O	153-1602-14
MA7	154-1602-14
MA4	155-1602-14
VACUUM	156-1602-14

Create a Hose Assembly to suit your specific requirements by following the steps below to generate your **HOSE ASSEMBLY PART NUMBER**.

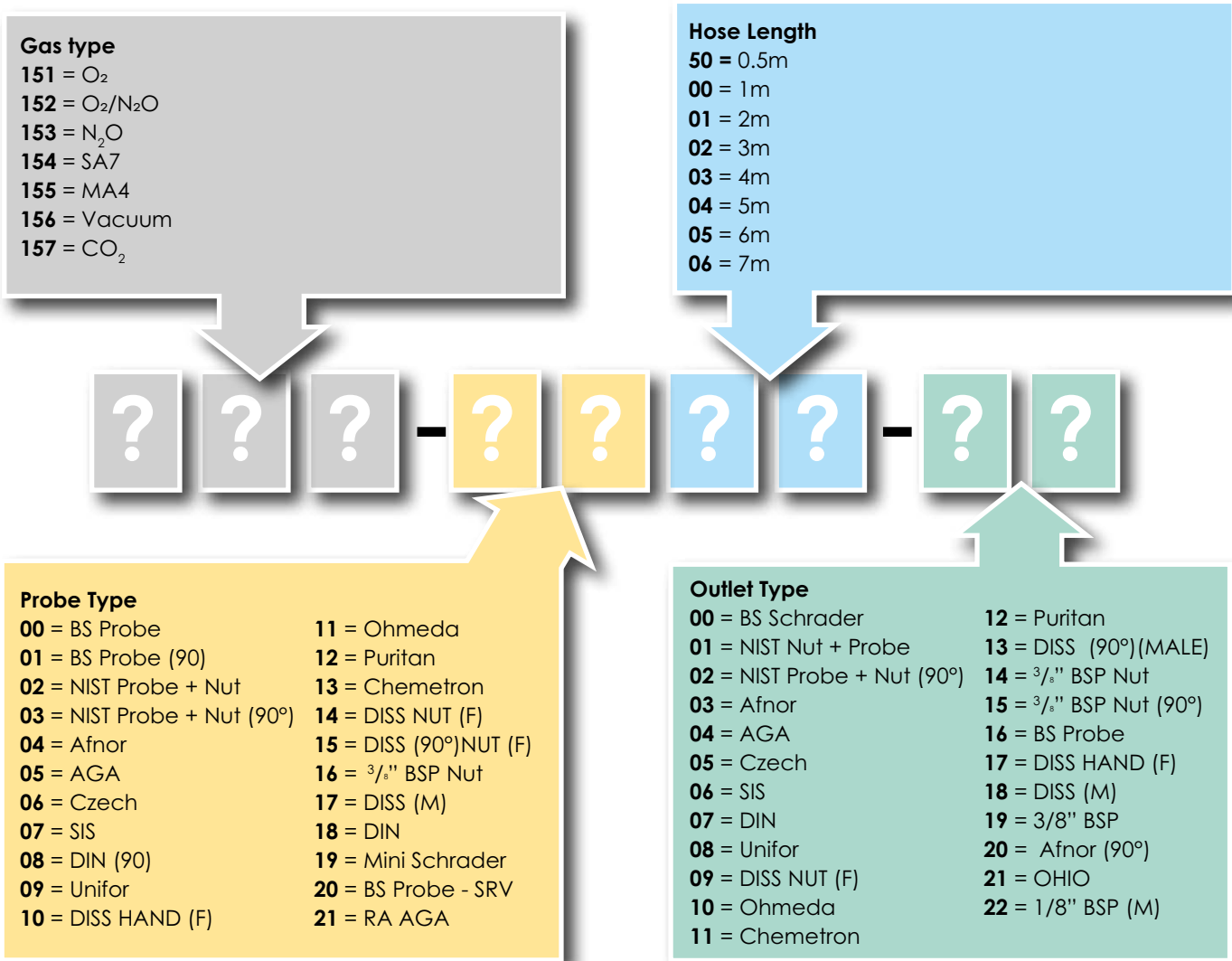
STEP 1 Choose the **GAS TYPE** that you require

STEP 2 Choose the **INLET / PROBE TYPE** you require

STEP 3 Choose the **HOSE LENGTH** you require

STEP 4 Choose the **OUTLET TYPE** you require

HOSE ASSEMBLY PART NUMBERING SYSTEM



GAS TYPES

O₂ O₂/N₂O N₂O SA7 MA4 VACUUM CO₂

PROBE TYPES



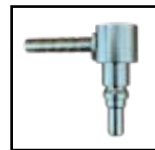
BS Probe

BS Probe
(SRV)BS Probe
(90°)NIST Probe
+ NutNIST Probe
+ Nut (90°)

AFNOR



AGA



Czech



SISS



DIN



UNIFOR



DISS HAND (F)



Ohmeda



Puritan



Chemetron



DISS Male



DISS NUT (F)



HOSE LENGTH

1M 2M 3M 4M 5M 6M 7M

OUTLET TYPES



BS Schrader

NIST Nut +
ProbeNIST Probe
+ Nut (90°)

AFNOR



DIN



Czech



AGA



SIS



UNIFOR



DISS (M)



Ohmeda



Chemetron



Puritan



DISS HAND (F)



DISS NUT (F)



OHIO



**PIN INDEX YOKE FILLING
ADAPTOR (1/4" BSP)**



GAS	Part No.
O ₂	673-0621-00
O ₂ /N ₂ O	673-0721-00
N ₂ O	673-0821-00
MA4	673-0921-00
CO ₂	673-0021-00

- Adaptor for filling Pin index cylinders
- Variety of thread types available
- Available for any medical gas type

**PIN INDEX FIXED YOKE
FILLING ADAPTOR (1/4" BSP)**



GAS	Part No.
O ₂	673-1221-00
O ₂ /N ₂ O	673-1321-00
N ₂ O	673-1421-00
MA4	673-1521-00
CO ₂	673-1621-00

- Adaptor for filling Pin index cylinders
- Variety of thread types available
- Available for any medical gas type

HOSE FERRULE



Part No.
617-1024-00

- Stainless steel
- Different sizes available

HEAT SHRINK SLEEVING



Colour	Part No.
White	015-0014-00
Black	015-0026-00
Blue	015-0027-00
Yellow	015-0028-00
Clear	015-0029-00
Grey	015-0030-00

- 25mm length
- Pack of 20

MEDICAL GAS HOSE

GAS	Part No.
O ₂	037-3101-03
O ₂ /N ₂ O	037-3100-01
CO ₂	037-3106-00
N ₂ O	037-3300-00
SA7	037-3500-00
MA4	037-3101-02
VACUUM	037-3013-00

12.75mm OD x 6.35mm ID

- 30M coils
- Anti-static
- Phthalate Free

DISPOSABLE HOSE - AGSS PROBES

Available in different hose length

*Please contact a member of our sales team
for part numbering information for the Pipeline
Reducing Regulator & the Disposable Hose*

LOW PRESSURE ALARM

Part No.
673-0494-00

- Low pressure alarm which makes an audible sound when the input pressure drops below 3BAR

LEAK DETECTOR

Part No.
673-0769-00

- BS Probe - Schrader
- Available for all gas types
- Available with all fitting types

SLOW RELEASE VALVES

- Available for all gas types



MEDICAL GAS FITTINGS



BS PROBE



GAS	Part No.
O ₂	177-0706-00
MA4	177-0707-00
SA7	177-1044-00
N ₂ O	177-1043-00
CO ₂	177-1140-00
O ₂ /N ₂ O	177-0814-00
Vacuum	177-1045-00
Heliox	673-4006-00

- 1/4" Hose Barb (other sizes available)
- Stainless Steel
- Gas distinct 'collar'
- Meets British Standard

RIGHT ANGLED BS PROBE



GAS	Part No.
O ₂	673-4007-00
MA4	673-4008-00
SA7	673-4009-00
N ₂ O	673-4010-00
CO ₂	673-4230-00
O ₂ /N ₂ O	673-4011-00
Vacuum	673-4012-00
Heliox	673-4013-00

- 1/4" Hose Barb (other sizes available)
- Stainless Steel
- Gas distinct 'collar'
- Meets British Standard

DIRECT BS PROBE 3/8" BSP THREAD



GAS	Part No.
O ₂	673-4014-00
MA4	673-4015-00
SA7	673-4016-00
N ₂ O	673-4017-00
CO ₂	673-4231-00
O ₂ /N ₂ O	673-4018-00
Vacuum	673-4019-00
Heliox	673-4020-00

- 3/8" BSP Thread
- Stainless Steel
- Gas distinct 'collar'
- Meets British Standard

NIST PROBE (Including O-Ring)



GAS	Part No.
O ₂	177-0890-00
MA4	177-1092-00
SA7	673-4037-00
N ₂ O	177-0893-00
CO ₂	673-4233-00
O ₂ /N ₂ O	673-4039-00
Vacuum	673-4040-00
Heliox	673-4041-00

- 1/4" Hose Barb (other sizes available)
- Stainless Steel
- Gas specific engraving
- Gas specific indexing

NIST NUT



GAS	Part No.
O ₂	177-0891-00
MA4	177-1095-00
SA7	673-4045-00
N ₂ O	177-0896-00
CO ₂	673-4226-00
O ₂ /N ₂ O	673-4047-00
Vacuum	673-4048-00
Heliox	673-4049-00

- Plated brass nut
- Gas specific engraving on NIST Nut
- Stainless Steel

NIST NUT + PROBE (Including O-Ring)



GAS	Part No.
O ₂	673-4027-00
MA4	673-4028-00
SA7	673-4029-00
N ₂ O	673-4030-00
CO ₂	673-4224-00
O ₂ /N ₂ O	673-4031-00
Vacuum	673-4032-00
Heliox	673-4033-00

- 1/4" Hose Barb (other sizes available)
- Stainless Steel (NIST PROBE)
- Gas specific engraving
- Gas specific indexing

DIRECT BS PROBE - M14X1 THREAD



GAS	Part No.
O ₂	673-4021-00
MA4	673-4022-00
SA7	673-4023-00
N ₂ O	673-4024-00
CO ₂	673-4235-00
O ₂ /N ₂ O	673-4025-00

- M14x1 Thread
- Stainless Steel
- Gas distinct 'collar'
- Meets British Standard

DIRECT BS PROBE - 9/16" UNF DISS



GAS	Part No.
O ₂	673-4026-00
CO ₂	673-4223-00

- 9/16" UNF DISS
- Stainless Steel
- Gas distinct 'collar'
- Meets British Standard

FEMALE NIST WITH HOSE TAIL



GAS	Part No.
O ₂	673-4051-00
MA4	673-4052-00
SA7	673-4053-00
N ₂ O	673-4054-00
CO ₂	673-4227-00
O ₂ /N ₂ O	673-4055-00
Vacuum	673-4056-00

- Gas specific engraving
- Stainless Steel

FEMALE NIST RIGHT ANGLED HOSE TAIL



GAS	Part No
O ₂	673-4057-00
MA4	673-4058-00
SA7	673-4059-00
N ₂ O	673-4060-00
CO ₂	673-4232-00
O ₂ /N ₂ O	673-4061-00
Vacuum	673-4062-00

- Gas specific Female NIST
- Gas specific engraving
- Stainless Steel

FEMALE NIST 1/8" BSP THREAD



GAS	Part No.
O ₂	673-4063-00
MA4	673-4064-00
SA7	673-4065-00
N ₂ O	673-4066-00
CO ₂	673-4229-00
O ₂ /N ₂ O	673-4067-00
Vacuum	673-4068-00

- Gas specific Female NIST
- Gas specific engraving
- Stainless Steel

AFNOR PROBE



GAS	Part No.
O ₂	673-4069-00
MA4	673-4070-00
N ₂ O	673-4071-00
CO ₂	673-4230-00
O ₂ /N ₂ O	673-4072-00
Vacuum	673-4073-00

- French Standard
- Right Angle
- 1/4" Hose Barb (other sizes available)
- Stainless Steel

AGA PROBE



GAS	Part No
O ₂	673-4074-00
MA4	673-4234-00
N ₂ O	673-4076-00
CO ₂	673-4231-00
O ₂ /N ₂ O	673-4077-00
Vacuum	673-4078-00

- Scandinavian Standard
- Right Angle
- 1/4" Hose Barb (other sizes available)
- Stainless Steel

CZECH PROBE



GAS	Part No.
O ₂	673-4079-00
MA4	673-4080-00
N ₂ O	673-4081-00
CO ₂	673-4232-00
O ₂ /N ₂ O	673-4082-00
Vacuum	673-4083-00

- Czech Republic Standard
- Right Angle
- 1/4" Hose Barb (other sizes available)
- Stainless Steel

SIS PROBE



GAS	Part No.
O ₂	673-4084-00
MA4	673-4085-00
N ₂ O	673-4086-00
CO ₂	673-4233-00
O ₂ /N ₂ O	673-4087-00
Vacuum	673-4088-00

- Australian Standard
- Right Angle
- 1/4" Hose Barb (other sizes available)
- Stainless Steel

DIN PROBE



GAS	Part No
O ₂	673-4089-00
MA4	673-4090-00
N ₂ O	673-4091-00
CO ₂	673-4234-00
O ₂ /N ₂ O	673-4092-00
Vacuum	673-4093-00

- German Standard
- Right Angle
- 1/4" Hose Barb (other sizes available)
- Stainless Steel

DISS NUT & NIPPLE (METAL)



GAS	Part No
O ₂	673-4241-00
MA4	673-4242-00
N ₂ O	673-4243-00
CO ₂	673-4244-00
O ₂ /N ₂ O	673-4245-00
Vacuum	673-4246-00

- N. American Standard
- 1/4" Hose Barb (other sizes available)

DISS NUT & NIPPLE (PLASTIC)



GAS	Part No
O ₂	673-4099-00
MA4	673-4100-00
N ₂ O	673-4101-00
CO ₂	673-4236-00
O ₂ /N ₂ O	673-4102-00
Vacuum	673-4103-00

- N. American Standard
- 1/4" Hose Barb (other sizes available)

UNIFOR



GAS	Part No.
O ₂	673-4094-00
MA4	673-4095-00
N ₂ O	673-4096-00
CO ₂	673-4235-00
O ₂ /N ₂ O	673-4097-00
Vacuum	673-4098-00

- Italian Standard
- 1/4" Hose Barb (other sizes available)
- Stainless Steel

PURITAN



GAS	Part No.
O ₂	673-4108-00
MA4	673-4109-00
N ₂ O	673-4110-00
CO ₂	673-4238-00
O ₂ /N ₂ O	673-4111-00
Vacuum	673-4112-00

- N. American Standard
- 1/4" Hose Barb (other sizes available)

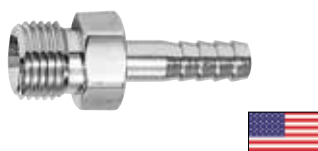
CHEMETRON



GAS	Part No.
O ₂	673-4236-00
MA4	673-4114-00
N ₂ O	673-4115-00
CO ₂	673-4239-00
O ₂ /N ₂ O	673-4116-00
Vacuum	673-4117-00

- N. American Standard
- 1/4" Hose Barb (other sizes available)

DISS MALE



GAS	Part No.
O ₂	673-4118-00
MA4	673-4119-00
N ₂ O	673-4120-00
CO ₂	673-4240-00
O ₂ /N ₂ O	673-4121-00
Vacuum	673-4237-00

- N. American Standard
- 1/4" Hose Barb (other sizes available)
- Stainless Steel

SINGLE AGA 1/4" BSPT THREAD (MALE)



GAS	Part No.
O ₂	673-4166-00
MA4	673-4167-00
SA7	673-4168-00
N ₂ O	673-4169-00
CO ₂	673-4247-00
O ₂ /N ₂ O	673-4238-00
Vacuum	673-4239-00

- Scandinavian Standard

SINGLE DISS 1/4" BSPT THREAD (MALE)



GAS	Part No.
O ₂	673-4196-00
MA4	673-4197-00
SA7	673-4198-00
N ₂ O	673-4199-00
CO ₂	673-4252-00
O ₂ /N ₂ O	673-4200-00
Vacuum	673-4201-00

- N. American Standard

SINGLE OHMEDA 1/4" BSPT THREAD (MALE)



GAS	Part No.
O ₂	673-4202-00
MA4	673-4203-00
SA7	673-4204-00
N ₂ O	673-4205-00
CO ₂	673-4253-00
O ₂ /N ₂ O	673-4206-00
Vacuum	673-4207-00

- N. American Standard

SINGLE AFNOR 1/4" BSPT THREAD (MALE)



GAS	Part No.
O ₂	673-4160-00
MA4	673-4161-00
SA7	673-4162-00
N ₂ O	673-4163-00
CO ₂	673-4246-00
O ₂ /N ₂ O	673-4164-00
Vacuum	673-4165-00

- French Standard

OHIO 1/4" BSPT THREAD (MALE)



GAS	Part No.
O ₂	673-0195-00

- N. American Standard

SINGLE CZECH 1/4" BSPT THREAD (MALE)



GAS	Part No.
O ₂	673-4172-00
MA4	673-4173-00
SA7	673-4174-00
N ₂ O	673-4175-00
CO ₂	673-4248-00
O ₂ /N ₂ O	673-4176-00
Vacuum	673-4177-00

- Czech Republic Standard

SINGLE SIS 1/4" BSPT THREAD (MALE)



GAS	Part No.
O ₂	673-4178-00
MA4	673-4179-00
SA7	673-4180-00
N ₂ O	673-4181-00
CO ₂	673-4249-00
O ₂ /N ₂ O	673-4182-00
Vacuum	673-4183-00

- Australian Standard

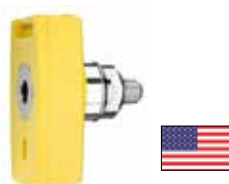
SINGLE DIN 1/4" BSPT THREAD (MALE)



GAS	Part No.
O ₂	673-4184-00
MA4	673-4185-00
SA7	673-4186-00
N ₂ O	673-4187-00
CO ₂	673-4250-00
O ₂ /N ₂ O	673-4188-00
Vacuum	673-4189-00

- German Standard

SINGLE CHEMETRON 1/4" BSPT THREAD (MALE)



GAS	Part No.
O ₂	673-4208-00
MA4	673-4209-00
SA7	673-4210-00
N ₂ O	673-4211-00
CO ₂	673-4254-00
O ₂ /N ₂ O	673-4212-00
Vacuum	673-4213-00

- N. American Standard

SINGLE PURITAN 1/4" BSPT THREAD (MALE)



GAS	Part No.
O ₂	673-4214-00
MA4	673-4215-00
SA7	673-4216-00
N ₂ O	673-4217-00
CO ₂	673-4255-00
O ₂ /N ₂ O	673-4218-00
Vacuum	673-4219-00

- N. American Standard

SINGLE UNIFOR 1/4" BSPT THREAD (MALE)



GAS	Part No.
O ₂	673-4190-00
MA4	673-4191-00
SA7	673-4192-00
N ₂ O	673-4193-00
CO ₂	673-4251-00
O ₂ /N ₂ O	673-4194-00
Vacuum	673-4195-00

- Italian Standard

55

OHMEDA



GAS	Part No.
O ₂	673-4103-00
MA4	673-4104-00
N ₂ O	673-4105-00
CO ₂	673-4237-00
O ₂ /N ₂ O	673-4106-00
Vacuum	673-4107-00

- N. American Standard
- 1/4" Hose Barb (other sizes available)

SINGLE BS SCHRADER 1/4" BSPT THREAD (MALE)



GAS	Part No.
O ₂	673-4122-00
MA4	673-4123-00
SA7	673-4124-00
N ₂ O	673-4125-00
CO ₂	673-4241-00
O ₂ /N ₂ O	673-4126-00
Vacuum	673-4127-00

Each Schrader is available with the fittings below.
Others available upon request.



1/4" BSPT THREAD
(MALE)



1/4" BSPT THREAD
(FEMALE)



HOSE TAIL



3/4" BSP NUT + NIPPLE





KOHLBRAT & BUNZ

HOSPITAL VACUUM EQUIPMENT



BNOS Meditech is the UK Distributor for Kohbrat & Bunz.
The company Kohbrat & Bunz develop and produce Medvac
equipment for Hospital use.

ADULT MRI VACUUM MATTRESS



- Full body
- For safe immobilisation
- Easy to clean & disinfect
- Increased patient scans
- Patient is supported & immobilised
- Good insulation properties

CHILD 0-5 YEARS MRI VACUUM MATTRESS



- For safe immobilisation
- Easy to clean & disinfect
- Increased patient scans
- Patient is supported & immobilised
- Good insulation properties

INFANT 0-5 MONTHS MRI VACUUM MATTRESS



- For safe immobilisation
- Easy to clean & disinfect
- Increased patient scans
- Patient is supported & immobilised
- Good insulation properties

HAND & FOOT MRI VACUUM MATTRESS



- For safe immobilisation
- Easy to clean & disinfect
- Increased patient scans
- Patient is supported & immobilised
- Good insulation properties

KNEE, LEG & FOOT MRI VACUUM MATTRESS



- For safe immobilisation
- Easy to clean & disinfect
- Increased patient scans
- Patient is supported & immobilised
- Good insulation properties

ANKLE MRI VACUUM MATTRESS



- For safe immobilisation
- Easy to clean & disinfect
- Increased patient scans
- Patient is supported & immobilised
- Good insulation properties

INFANT 0-5 MONTHS MRI INCUBATOR MATTRESS



- For safe immobilisation
- Easy to clean & disinfect
- Increased patient scans
- Patient is supported & immobilised
- Good insulation properties

KNEE, ANKLE & FOOT MRI VACUUM MATTRESS



- For safe immobilisation
- Easy to clean & disinfect
- Increased patient scans
- Patient is supported & immobilised
- Good insulation properties

HEAD IMMOBILISER



- For safe immobilisation
- Easy to clean & disinfect
- Increased patient scans
- Patient is supported & immobilised
- Good insulation properties

HEAD IMMOBILISER



- For safe immobilisation
- Easy to clean & disinfect
- Increased patient scans
- Patient is supported & immobilised
- Good insulation properties

HEAD IMMOBILISER



- For safe immobilisation
- Easy to clean & disinfect
- Increased patient scans
- Patient is supported & immobilised
- Good insulation properties

BULB PUMP



Portable hand pump for use with head immobilisers

1. DEFINITIONS AND INCORPORATION

- 1.1 In these Conditions, "Meditech" means B.N.O.S. Meditech Limited (Company Number 02368331) whose registered office is at Unit 9, Fifth Avenue, Bluebridge Industrial Estate, Halstead, Essex CO9 2SZ; "Contract" means any contract between Meditech and the Customer for the sale and purchase of the Goods and/or Services, including these Conditions; "Customer" means the party purchasing Goods and/or Services from Meditech; "Goods" means the medical equipment, kits and accessories supplied to the Customer by Meditech pursuant to the Contract; and "Services" means the repair, maintenance and related services be supplied to the Customer by Meditech pursuant to the Contract.
- 1.2 Subject to any variation pursuant to this Condition 1.2, the Contract will be on these Conditions to the exclusion of all other terms and conditions (including any terms or conditions which the Customer purports to apply under any purchase order, confirmation of order, specification or other document). No variation to these Conditions or any representations about the Goods and/or the Services shall have any effect unless expressly agreed in writing and signed by a duly authorised representative of Meditech.

2. ORDERS, DELIVERY, RISK AND TITLE

- 2.1 Each order for Goods and/or Services by the Customer from Meditech shall be deemed to be an offer by the Customer to purchase Goods and/or Services subject to these Conditions. No order placed by the Customer shall be deemed to be accepted by Meditech until a written acceptance of order is issued by Meditech or (if earlier) Meditech commences performance of the Contract.
- 2.2 The price of the Goods excludes carriage charges which the Customer shall pay in addition. Unless otherwise agreed in writing by Meditech, delivery of the Goods shall take place upon arrival of the Goods at the location specified in the Customer's order or otherwise agreed to in writing.
- 2.4 Any dates specified by Meditech for delivery of Goods and/or performance of the Services are an estimate only. Goods are at the risk of the Customer from the time of delivery but title in Goods shall not pass from Meditech until the Customer has paid all amounts due under the Contract. Until title in Goods passes to the Customer the Customer shall (a) hold Goods and each of them on a fiduciary basis as bailee for Meditech; (b) store Goods separately from all other goods in its possession (marked in such a way that they are clearly identified as Meditech's property); and (c) (subject to written agreement to the contrary by Meditech) not dispose of them. Further, until such time as title in Goods passes to the Customer, the Customer shall upon request forthwith deliver up such Goods to Meditech. The Customer hereby grants Meditech an irrevocable licence at any time to enter any premises where Goods are or may be stored in order to inspect them, and, until such time as title in Goods passes to the Customer, to recover them.

3. PRICE AND PAYMENT

- 3.1 The price for Goods and/or Services shall be the price set out in Meditech's quotation issued to the Customer, save that, unless otherwise stated in writing, any such quotation is valid for a period of 30 days from its date. Thereafter, a new quotation must be requested by the Customer.
- 3.2 All prices shall be exclusive of VAT, which if lawfully chargeable the Customer will pay in addition. Payment is due within [30] days of the date of Meditech's invoice. The Customer shall make all payments due under the Contract with out any deduction whether by way of set-off, counterclaim, discount, abatement or otherwise.
- 3.3 If the Customer fails to pay any sum due pursuant to the Contract the Customer will be liable to pay interest to Meditech on such sum from the due date for payment at the annual rate of [4]% above the base lending rate from time to time of NatWest Bank plc, accruing on a daily basis until payment is made, whether before or after any judgment.

4. WARRANTY AND LIABILITY

- 4.1 Subject to Condition 4.2 Meditech warrants that, provided the Customer and end-users follow Meditech's instructions as to the storage, installation, commissioning, use or maintenance of Goods or (if there are none) good industry practice. Goods will for a period as per time specified in the devices data sheet, be free of material defects. This is under the condition that the device is sent to Meditech for service at the 5 year period for those devices that have a 7-year warranty. If any Goods do not conform with such warranty Meditech shall at its option repair or replace such Goods as soon as reasonably practicable or refund the price of such Goods. This Condition 4.1 states the exclusive remedy of the Customer, and the entire liability of Meditech, for breach of such warranty.

- 4.2 Meditech shall not be liable for any breach of the above warranty given in relation to Goods unless the Customer gives written notice of the defect to Meditech within 30 days of the time when the Customer discovers or ought to have discovered the defect; and unless Customer (if asked to do so by Meditech) returns such Goods to Meditech at Customer cost for inspection by Meditech.
- 4.3 Meditech warrants that it will perform Services with reasonable care and skill. If it is shown to be in breach of such warranty in relation to particular Services, it shall at its own cost as soon as reasonably practicable re perform the relevant Services or instead (if it so decides) waive or refund to the Customer such of the fees payable or paid to Meditech by the Customer under the Contract as are attributable to those particular Services. This Condition 4.3 states the exclusive remedy of the Customer, and the entire liability of Meditech, for breach of such warranty.
- 4.4 Save as expressly set out herein, all warranties, conditions and other terms implied by statute or common law or otherwise are, to the fullest extent permitted by law, excluded from the Contract save that nothing in these Conditions excludes or limits the liability for fraud or for death or personal injury caused by negligence.
- 4.5 Subject to Condition 4.4, Meditech's total liability in contract, tort (including negligence or breach of statutory duty), misrepresentation or otherwise, arising out of or in connection with the Contract shall be limited to the price payable for the Goods and/or the Services which are the subject of the Customer's claim. Meditech shall not be liable to the Customer, in contract in tort or otherwise, for any loss of profits, business, revenue, goodwill or anticipated savings or for any indirect or consequential or economic loss whatsoever howsoever arising out of or in connection with the Contract.
- 4.6 Meditech shall not be liable or responsible for any loss or damage caused by delay in the performance or non-performance of its obligations hereunder where the same is occasioned by acts or omissions of the Customer, strikes, lock-out or trade dispute, difficulties in obtaining labour or materials or any other cause whatsoever beyond Meditech's reasonable control including but not limited to any act of God, war, terrorism, transport, civil disturbance, government or parliamentary restrictions, prohibitions or enactments of any kind. If the cause continues for more than 60 days either party may terminate the Contract by giving the other party no less than 30 days' written notice

5. GENERAL

- 5.1 The Customer may not assign or transfer its rights or delegate its duties under the Contract either in whole or in part. Meditech may assign the Contract in whole or part and/or delegate the performance of its obligations to third parties without reference to the Customer.
- 5.2 The failure of a party to exercise or enforce any right under the Contract shall not be deemed to be a waiver of that right nor operate to bar the exercise or enforcement of it at any time or times thereafter.
- 5.3 The Contract is not intended to confer a benefit on any third party, whether pursuant to the Contracts (Rights of Third Parties) Act 1999 or otherwise.
- 5.4 If any term of the Contract is held to be void or unenforceable by any reason of law, it shall be void or unenforceable to that extent only and no further and all other terms shall remain valid and fully enforceable.
- 5.5 Meditech may terminate the Contract forthwith by notice in writing to the Customer if the Customer ceases or threatens to cease to carry on its business or adopts a resolution for it to be wound up or if a petition is presented for the appointment of an administrator or a receiver or an administrative receiver is appointed in respect of any part of the Customer's undertaking or assets or if the Customer is unable to pay its debts within the meaning of Section 123 of the Insolvency Act 1986 (or any re-enactment of further enactment thereof). Termination of the Contract, for whatever cause, shall be without prejudice to the rights of either party accrued prior thereto, including without limitation any right to payment of any sum and any right to sue in respect of any antecedent breach of the Contract.
- 5.6 The Contract shall be governed by and construed in all respects in accordance with the laws of England and the parties submit to the exclusive jurisdiction of the English courts in respect of any dispute or claim arising out of or relating to the Contract.

PRODUCT SERVICING & MAINTENANCE

By customer request, regular servicing of all units is available. The units will be returned to Meditech where an initial examination takes place. Meditech will then send a quotation (including carriage) to the customer asking how they wish to proceed. Once the customer has given the go ahead, Meditech will proceed to carry out the check / service / rebuild of the unit. The unit will then be returned to the customer upon completion. We also offer a service contract set up which will be tailor made to suit the individual needs of the customer. A fixed-price calibration service on microVENT™ units is also available on request.

For more information on loan equipment and test kits please contact a member of our staff.

SERVICE TRAINING

We offer training courses so that a customer's engineer may learn to carry out various levels of service on their Meditech products. The basic levels are;

- Level 1:** Product familiarisation. Customer checks as detailed in user manual. Replacement of external parts without the use of tools.
- Level 2:** Calibration check using simple test equipment. Replacement of external parts including trigger and hose replacements. Use of simple tools will be required.
- Level 3:** Calibration checks using professional test equipment.

For more advanced levels of service training, please contact our sales team and they will be able to provide you with more information.

PLASTIC MOULDING

We have in-house capabilities to provide a wide range of Plastic Moulding Services to companies based Worldwide. With a dedicated team with over 50 years of experience, we are able to produce high quality plastic moulding products for a wide range of industries including; Medical, Engineering, Industrial & Aviation.

Plastic moulding Services we can offer;

- Sub contract plastic injection moulding services
- Two-part Liquid Silicone moulding
- Repair & maintenance of existing tools*
- Creation of new tools*

*Available in plastic and liquid silicone

PLATING

BNOS Meditech has a state of the art plating centre offering the best possible plating services to the Medical, Electronic, Marine, Aerospace, Engineering & manufacturing industries worldwide. We offer all types of electro-plating and polishing.

TECHNICAL SUPPORT

For any technical advice, support or pricing of our services please contact a member of staff via email or telephone and they will be able to help you.

Please take a look at our website or any of our social media pages for updates and further information.



Scan here



medITECH

MEDICAL GAS EQUIPMENT

B.N.O.S. Meditech Ltd.

**9 Fifth Avenue, Bluebridge Industrial Estate,
Halstead, Essex CO9 2SZ, England, UK.**

•Tel: +44 (0)1787 479475 •E-mail: sales@meditech.uk.com

www.meditech.uk.com

TO PURCHASE OR FOR FURTHER DETAILS:

**Contact us by email or telephone for more details,
including specific part numbers, prices, etc.**

B.N.O.S. Meditech Ltd.
9 Fifth Avenue, Bluebridge Industrial Estate,
Halstead, Essex CO9 2SZ, England, UK.
Tel: +44 (0)1787 479475 • Fax: +44 (0)1787 477747
E-mail: sales@meditech.uk.com • www.meditech.uk.com



Meditech products and components are CE marked in accordance with the European Medical Devices Directive 93/42/EEC and UKCA marked in accordance with the UK Medical Devices Regulations 2002. All items in this range are sold with a return to manufacturer warranty against manufacturing defects. These products are part of a series of medical gas and resuscitation products available from B.N.O.S. Meditech. If the product you require is not shown here, or if you require more information, please contact your distributor or contact us directly. Specifications may be subject to change without notice.

B.N.O.S. Meditech Ltd Terms and Conditions of sale apply, available on application or from our website.

Distributor: